

User Manual

SongBook+



Version 4.0

(Document Revision 2)

Table of contents

1	SongBook+ settings	5
2	Inserting files into SongBook+	6
2.1	With the Finder (Mac Computer).....	6
2.2	With iTunes (Windows PC and older Mac computers)	7
2.3	With Wi-Fi-sharing (Windows PC, Mac Computer).....	8
2.4	Without using any additional computer, via "Import files"	9
2.5	Without additional computer, using the "Files" app	10
2.6	Importing files from mail or other applications.....	11
3	Inserting unused files into the song list	12
3.1	Inserting files manually	12
3.2	Inserting files automatically	13
4	Using the song list	14
5	Editing song details.....	15
6	Displaying a PDF document and scrolling in the document	16
7	Preselecting next song without closing the current song.....	17
8	Using the metronome	18
9	Use of night colors.....	19
10	Recording scrolls automatically	20
11	Recording finger pointers in the "Karaoke style"	21
12	Inserting/editing/deleting annotations	22
12.1	Inserting annotations	23
12.2	Delete annotations.....	24
12.3	Editing Notes	24
12.4	Copying annotations	25
12.5	Saving frequently used annotations	26
12.6	Using saved annotations again	26
12.7	Action button annotations	27
13	Using playlists.....	28
13.1	Selecting an existing playlist	28
13.2	Adding a new playlist	29
13.3	Renaming or deleting playlists.....	30
13.4	Editing the content of the playlist.....	31
13.5	Live playlists	32
14	Sharing songs or files (export)	33
15	Importing lyrics and chords	34
15.1	Importing song lyrics and chords from MP3 files	34
15.1.1	<i>Adding a song without PDF and selecting MP3</i>	<i>34</i>
15.1.2	<i>Create PDF from lyrics in MP3.....</i>	<i>35</i>
15.2	Importing song lyrics and chords from MIDI files	35
15.3	Importing song lyrics and chords from LRC files	35
15.4	Importing song lyrics and chords from ChordPro files	35
16	Transpose chords.....	36

17	Scanning lyrics on paper with built-in camera.....	37
18	Using the MIDI features	38
18.1	Connecting iPad to MIDI	38
18.1.1	MIDI adapter and devices with USB MIDI interface.....	38
18.1.2	MIDI adapter directly connected to the iPad	39
18.1.3	Wirelessly via Bluetooth or Wi-Fi	39
18.2	Playing back MIDI files	40
18.2.1	Opening song text on incoming MIDI commands	41
18.3	Sending MIDI commands when song text is opened.....	42
18.3.1	Sending the configured BankSelect/ProgramChange commands	42
18.3.2	Sending the contents of a MIDI file upon opening the song	43
18.3.3	Sending other configurable MIDI commands.....	43
18.4	Sending MIDI commands when the song is started	43
18.4.1	Sending the contents of a MIDI file upon starting the song.....	43
18.4.2	Sending MIDI Start when the song is started	43
18.4.3	Sending other configurable MIDI commands.....	43
18.5	Sending MIDI commands when the song is stopped.....	44
18.5.1	Sending the contents of a MIDI file upon stopping the song	44
18.5.2	Sending MIDI Stop when the song is stopped	44
18.5.3	Sending other configurable MIDI commands.....	44
18.6	Sending MIDI commands at a button touch	44
19	Using foot pedals	45
19.1	Foot pedals that simulate an external keyboard	45
19.2	Foot pedals that send MIDI commands	46
20	Connecting multiple iPads with SongBook+	47
20.1	Synchronizing via code	48
20.2	Synchronizing via MIDI information.....	48
21	Using multiple books	49
22	Backing up and restoring your data	50
22.1	Backing up your files	50
22.1.1	Backing up your data with the Finder (Mac Computer).....	51
22.1.2	Backing up your data with iTunes (Windows PC and older Mac Computers).....	51
22.1.3	Backing up your data using WiFi sharing.	52
22.1.4	Backing up your data with the "Files" App.....	52
22.2	Restoring Your Files.....	54
23	Quitting SongBook+ or other apps completely.....	55
24	Individual audio outputs with external hardware	56
25	Multi-client support with subdirectories.....	57
26	Playing "Jingles"	58
27	Position markers and Loop funktion	59
28	Supported file formats	61
28.1	Files for text or note display	61
28.2	Music files.....	61
28.3	Midi files.....	61
28.4	Video files.....	61
28.5	ChordPro files.....	61
28.6	LRC files	61

28.7	MP3 files with with embedded text.....	61
29	Contribution	62
30	Contact information.....	62

1 SongBook+ settings

1. Press this button to go to settings.

2. Some important settings can be found right at the top of the first section.

3. Other settings grouped by the topic can be found below.

4. When you switch on the "Live Mode" switch, most of the settings will be hidden and many controls not necessary during live operation will be deactivated. This way SongBook is secured against accidental editing during the gig.

SongBook + automatically adjusts the language to the language set in the iPad.

If you prefer a different language, you will find a corresponding setting in the 'Other' section.

2 Inserting files into SongBook+

Before getting started, the files (PDF, TXT, ChordPro, music, midi or video files) that you want to use in SongBook+ have to be copied into the SongBook+.

Various ways to can copy files into SongBook+ are shown below:

2.1 With the Finder (Mac Computer)

On newer Mac computers (after introduction of the macOS 10.15 "Catalina" operating system version) the "Finder" program is used for inserting the files into the SongBook+.

If you have a Windows PC or a Mac with an older operating system, please see in the next chapter how it is done using "iTunes".

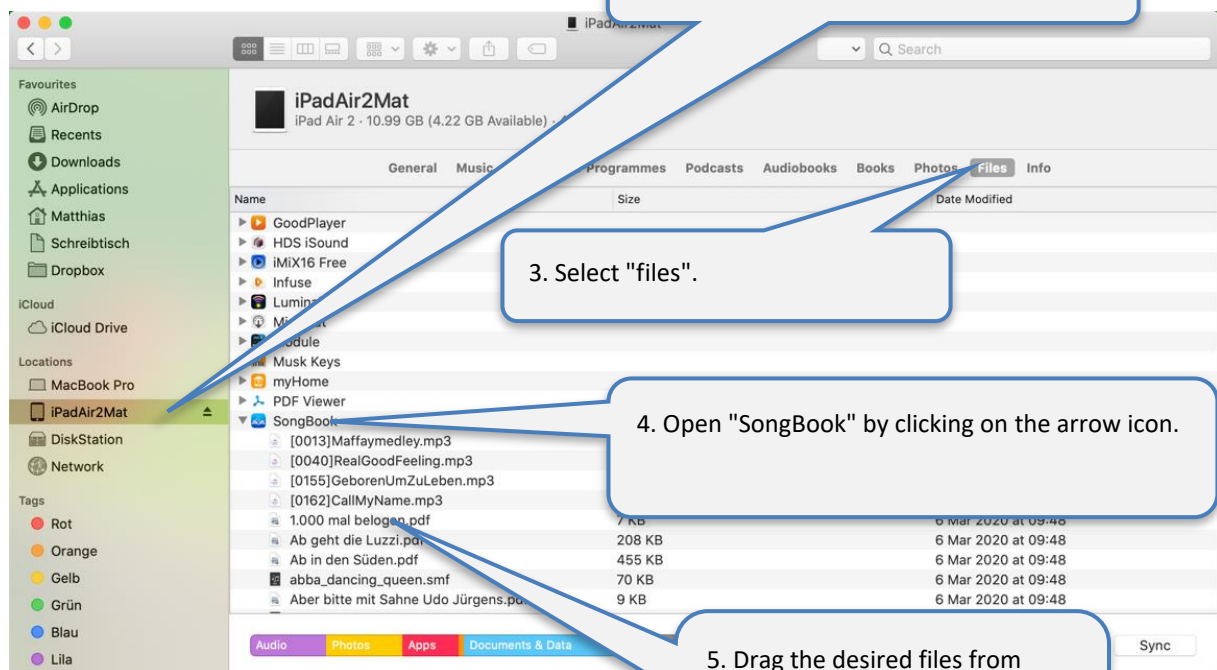
1. Connect the iPad to your Mac using the USB cable and start the "Finder" on your Mac

2. Press on the iPad/iPhone.

3. Select "files".

4. Open "SongBook" by clicking on the arrow icon.

5. Drag the desired files from another Finder window to this area.



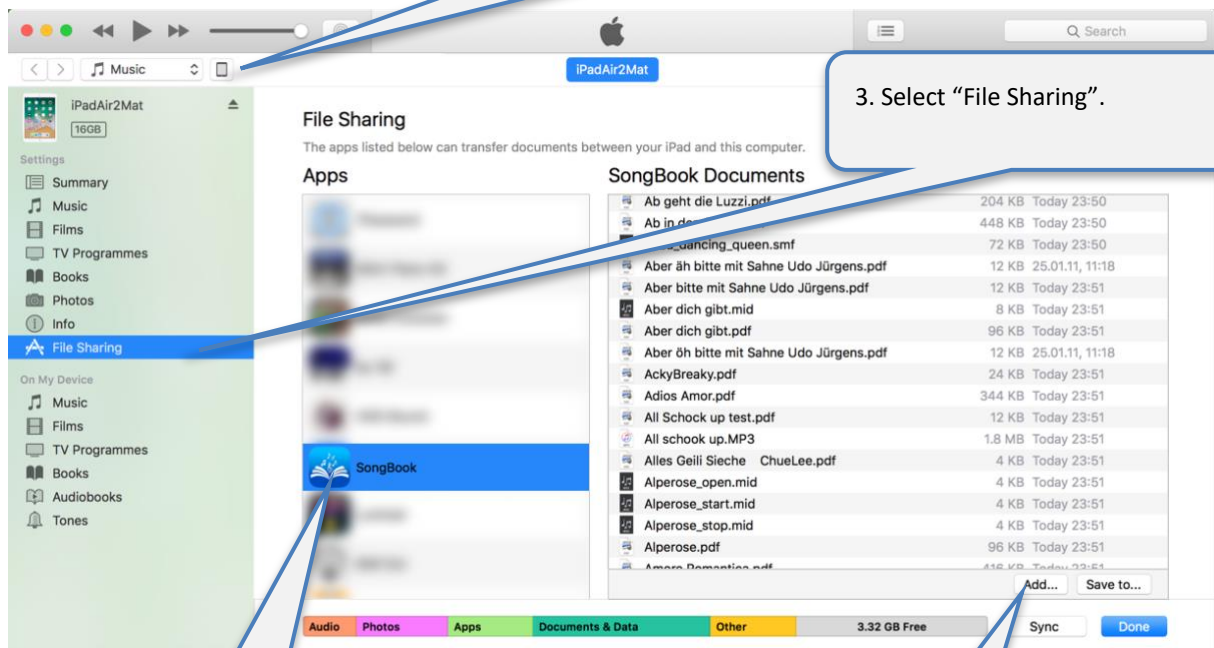
2.2 With iTunes (Windows PC and older Mac computers)

With Windows PC or older Mac computers, you can use the iTunes program to insert files into SongBook+ as follows:

1. Connect the iPad to your Mac using the USB cable and start the iTunes program on your computer

2. Press on iPad/iPhone.

3. Select "File Sharing".

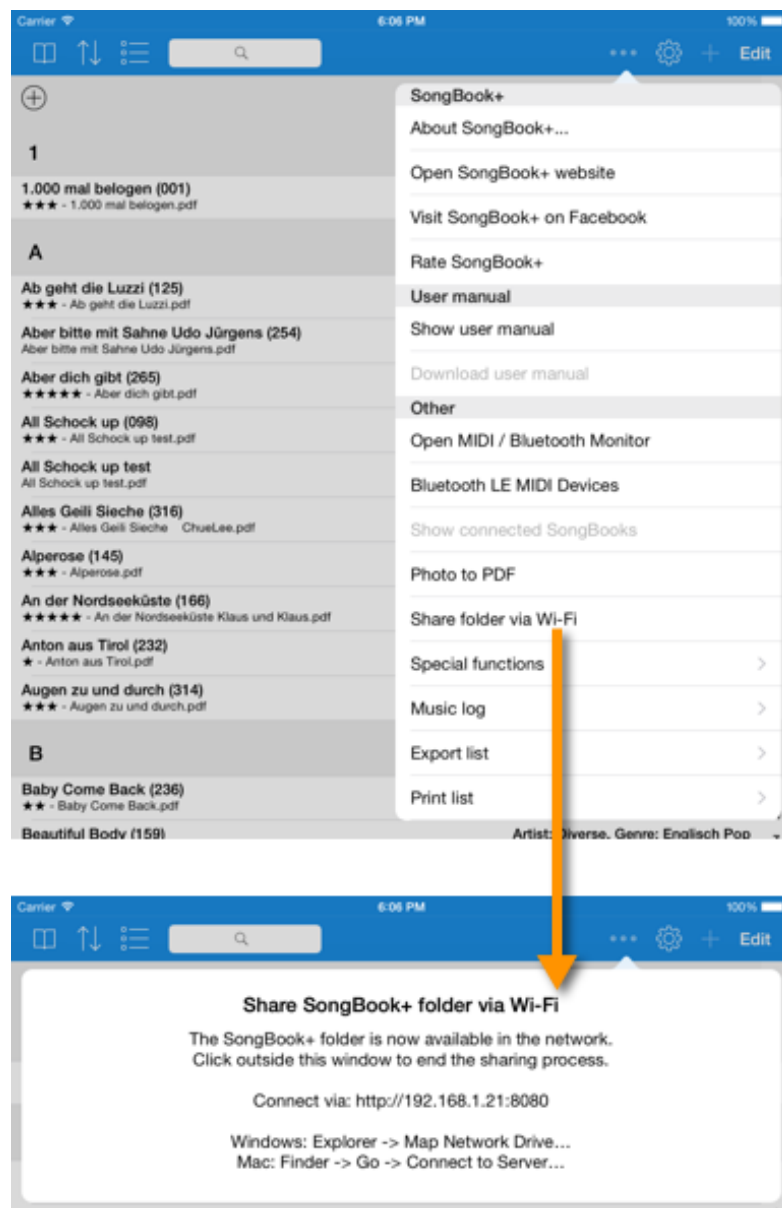


4. Select "SongBook"

5. Press "Add..." and then select the files on your computer that you want to add.

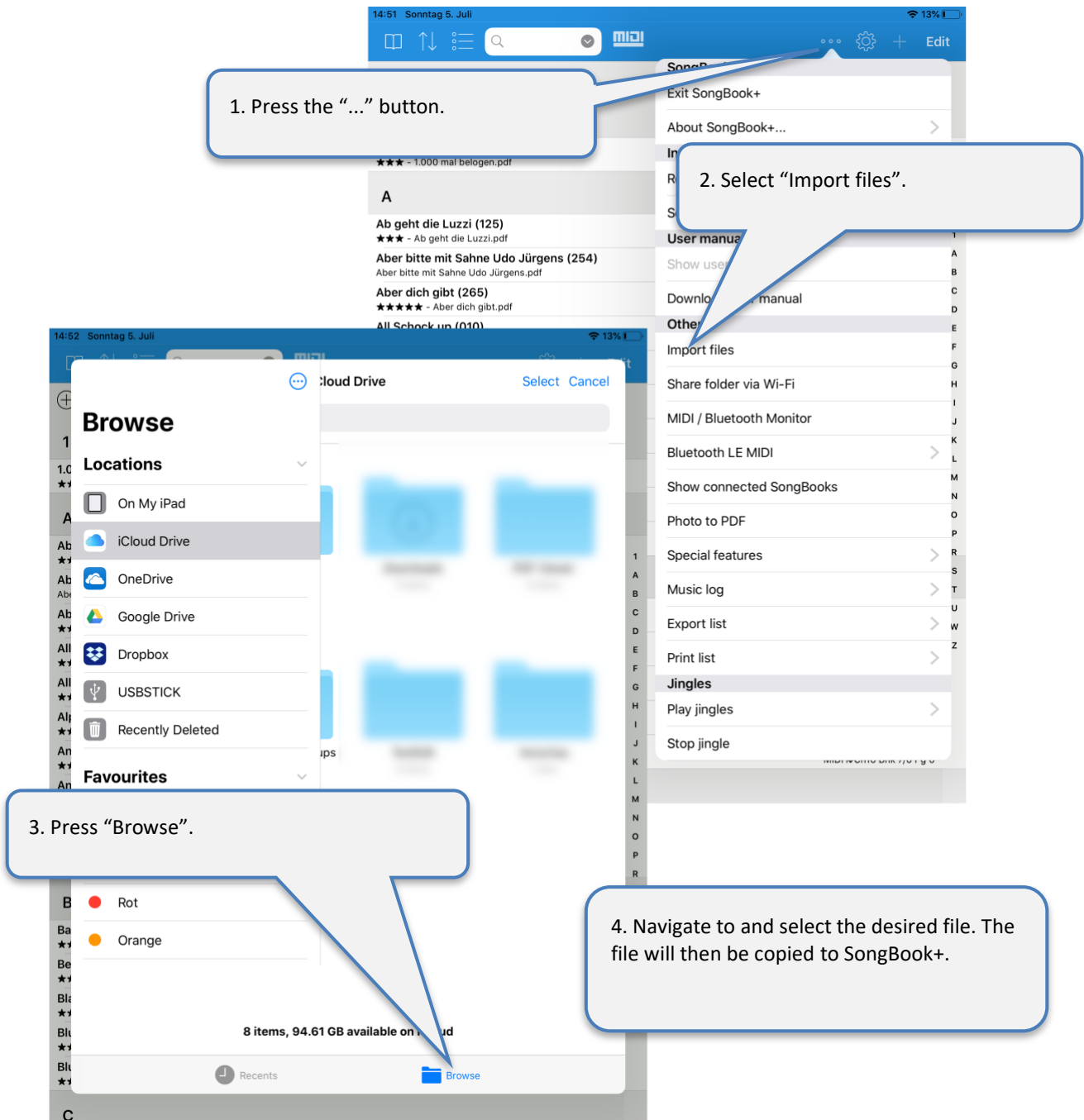
2.3 With Wi-Fi-sharing (Windows PC, Mac Computer)

You can temporarily share the SongBook+ folder via Wi-Fi and then wirelessly access it from a computer without iTunes on it.



2.4 Without using any additional computer, via “Import files”

Using the “Import files” function, files can be imported into the SongBook from a USB stick, your preferred cloud app or even a server directly from SongBook+.



Note on the use of USB sticks:

Depending on the iPad model and USB stick, you may receive an error message that the USB stick requires too much power and cannot be used.

In such cases, an active USB hub with power supply may be used.

2.5 Without additional computer, using the "Files" app

With the Files app, you can copy files to SongBook from a USB stick, your favorite cloud app, or even from a server.

1. Open the "Files" app. (Preferably keep the iPad in landscape orientation.)

3. Select "On my iPad".

2. Select the "Browse" tab.

4. Long press "SongBook" and then select "Open in new window".

The window divides in half. On the right you can see the content of SongBook+.

5. On the left side, open the folder in which the files to be copied can be found (in your preferred cloud app, a USB stick or on the network).

Drag the files to be copied onto the right side of the SongBook.

Note on the use of USB sticks:

Depending on the iPad model and USB stick, you may receive an error message that the USB stick requires too much power and cannot be used.

In such cases, an active USB hub with power supply may be used.

2.6 Importing files from mail or other applications

You can import PDF, music, or video files from any other apps that can create or download such files and use "Open in..." to transfer it to another app.

The following illustration shows as an example how you can import a PDF from an mail attachment:



3 Inserting unused files into the song list

After inserting PDF, music or video files into SongBook, they appear as “Unused Files”.

3.1 Inserting files manually

By following the steps below you can transfer them into the song list and provide additional information like title, artist, genre and MP3 file to play in the background.

1. Press “Edit”.

2. Press the “+” sign.

3. If necessary, change the title.

4. If you have numbered your songs, enter their numbers here.

5. You can enter here some short additional information that, for example, will be displayed during the preview of this song.

6. Enter the name of the artist and the genre or select the existing ones from the list.

7. If you want to playback one or more audio files, and/or a midi or video file, select them here.

8. Press “Save”.

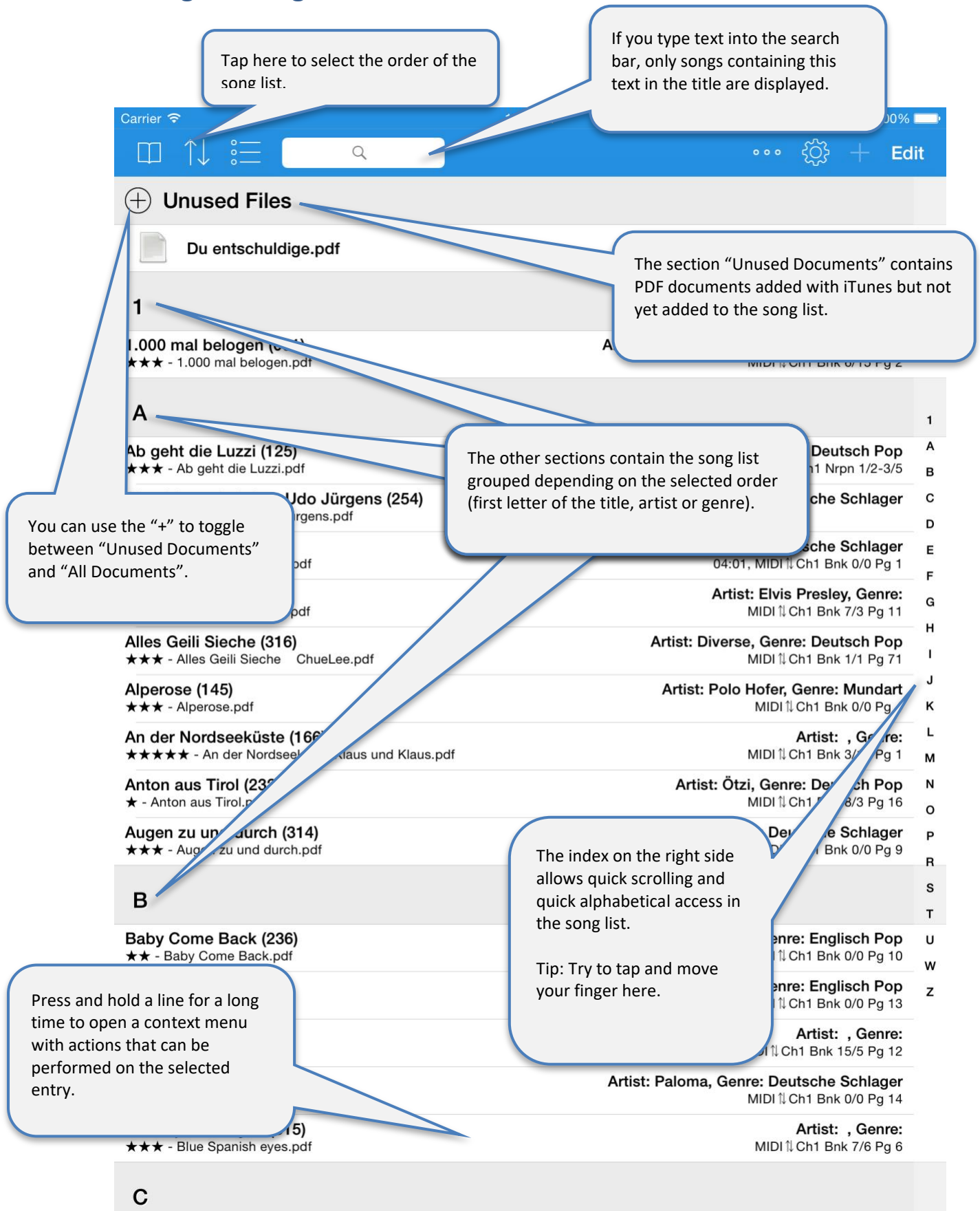
9. Insert another song using the “+” sign or press “Done” to finish.

3.2 Inserting files automatically

If you have copied many new files to the SongBook+ and you do not want to add them to the song list individually, SongBook+ can also automatically add them to the song list. The file name is then used as the title. All other fields remain empty and can be edited later.



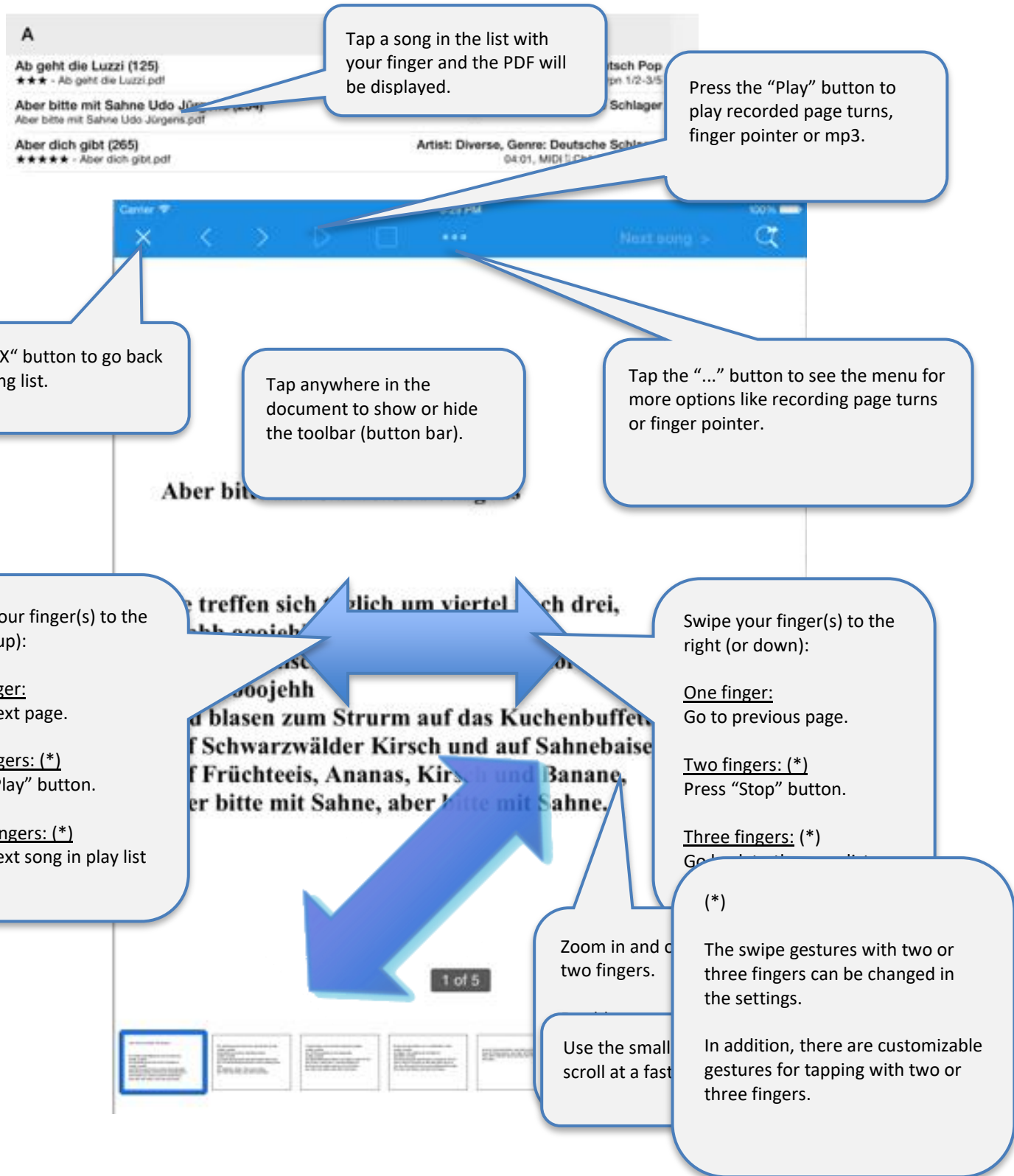
4 Using the song list



5 Editing song details



6 Displaying a PDF document and scrolling in the document



7 Preselecting next song without closing the current song

If the next song is already known, it is displayed in the first line of the table and in this button in the toolbar.

In addition, it is highlighted blue and marked with a pause icon in the list.

The currently playing song is highlighted green and marked with a play icon in the list.

If you are using playlists, the next song is automatically set to the next song in the playlist. (Optionally, this can be disabled.)

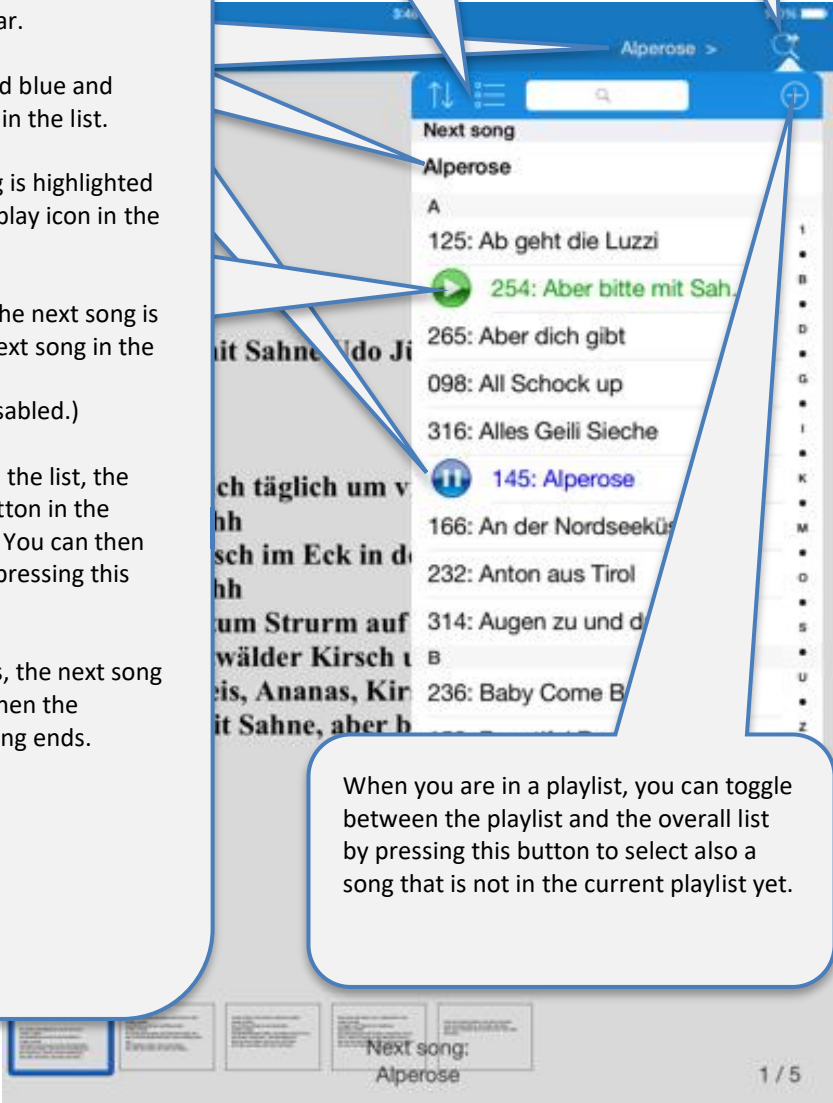
When you select a song in the list, the list disappears and the button in the toolbar is set to this song. You can then jump to the next song by pressing this button.

Depending on the settings, the next song will open automatically when the playback of the current song ends.

It is also possible to sort, filter and select a playlist here.

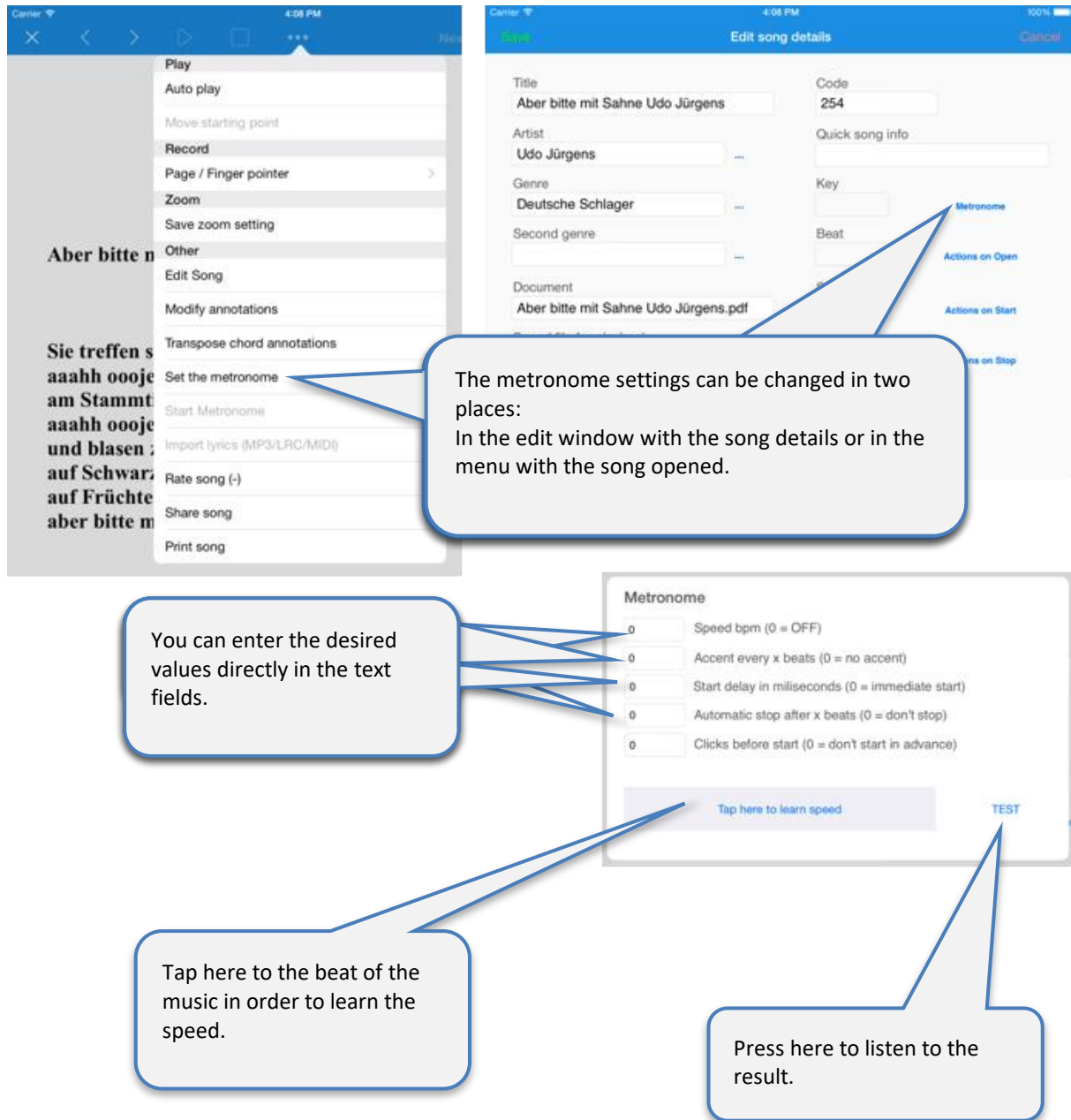
Tapping this button opens a list with the same content in the same order as selected in the song list in the main overview.

When you are in a playlist, you can toggle between the playlist and the overall list by pressing this button to select also a song that is not in the current playlist yet.

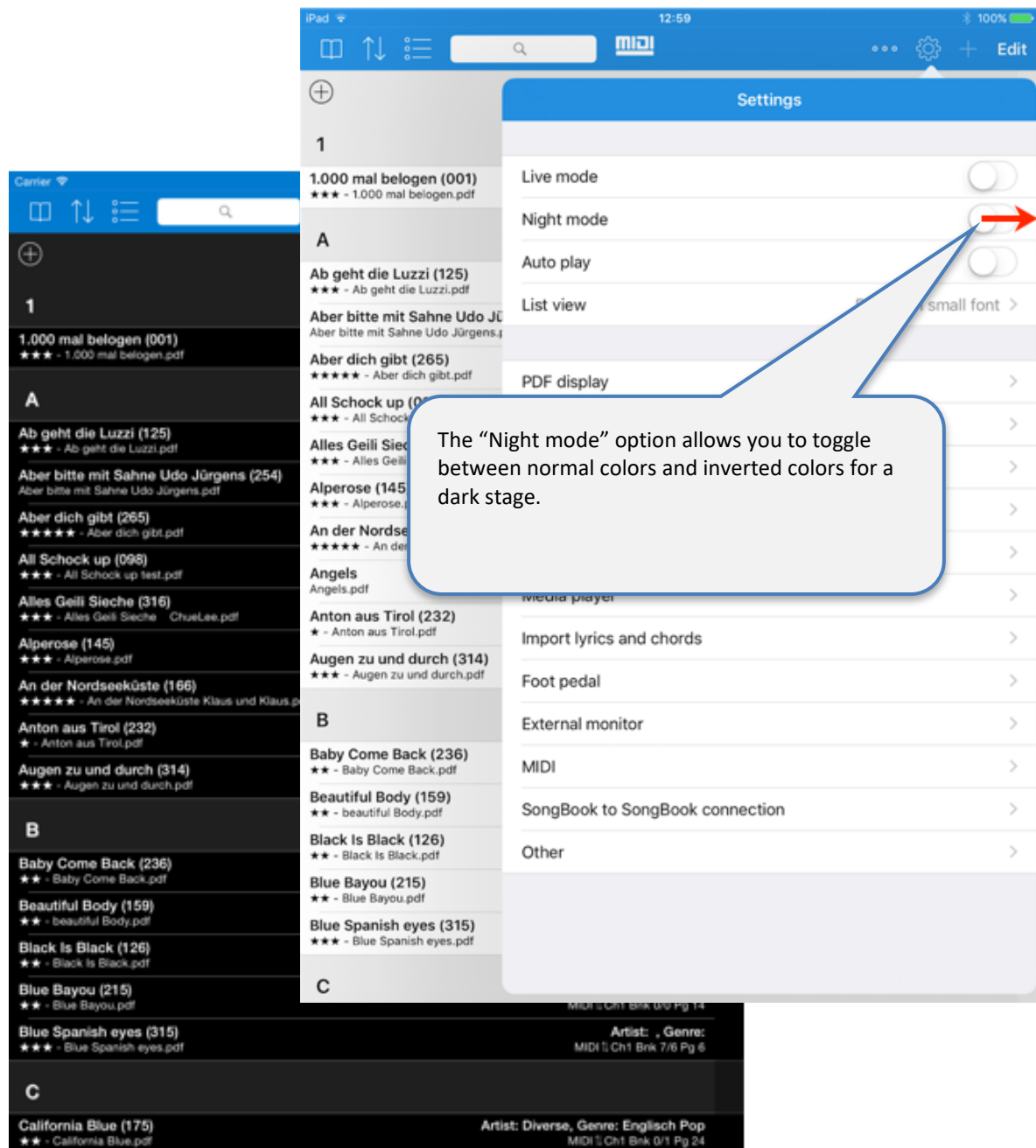


The screenshot shows the SongBook+ app interface. At the top, there's a blue header bar with the title 'Alperose' and a search icon. Below the header, there's a list of songs. The first song is 'Alperose' (145), which is highlighted in blue and has a pause icon. The second song is '254: Aber bitte mit Sah...' (254), which is highlighted in green and has a play icon. The list continues with other songs like '125: Ab geht die Luzzi', '265: Aber dich gibt', '098: All Schock up', '316: Alles Geili Sieche', '166: An der Nordseekü...', '232: Anton aus Tirol', '314: Augen zu und d...', and '236: Baby Come B...'. On the right side of the list, there's a vertical index bar with letters A through Z. At the bottom of the screen, there's a status bar showing 'Next song: Alperose' and '1 / 5'.

8 Using the metronome



9 Use of night colors



10 Recording scrolls automatically

In the document display, first press the “...” button, then select “Page / Finger pointer” and finally press “Record scrolls”.

Confirm and start recording using this button.

Use the arrow buttons or swipe your finger to scroll.
You can also use a foot pedal to show the next page.

Important note:
Page turns are always recorded in full page, even if you have configured SongBook+ for scrolling instead of page turns.
SongBook+ then calculates the right speed for scrolling.

Press the “Stop” button to stop recording.

All Shook Up
Presley, Elvis

A well I bless my soul
Whats wrong with me?
Im itching like a man on a crazy tree
My friends say Im actin w a bug
Im in love
Im all shook up
Mm mm oh, oh, yeah, y

11 Recording finger pointers in the “Karaoke style”

In the document display, first press the “...” button, then select “Page / Finger pointer” and finally press “Record finger pointer”.

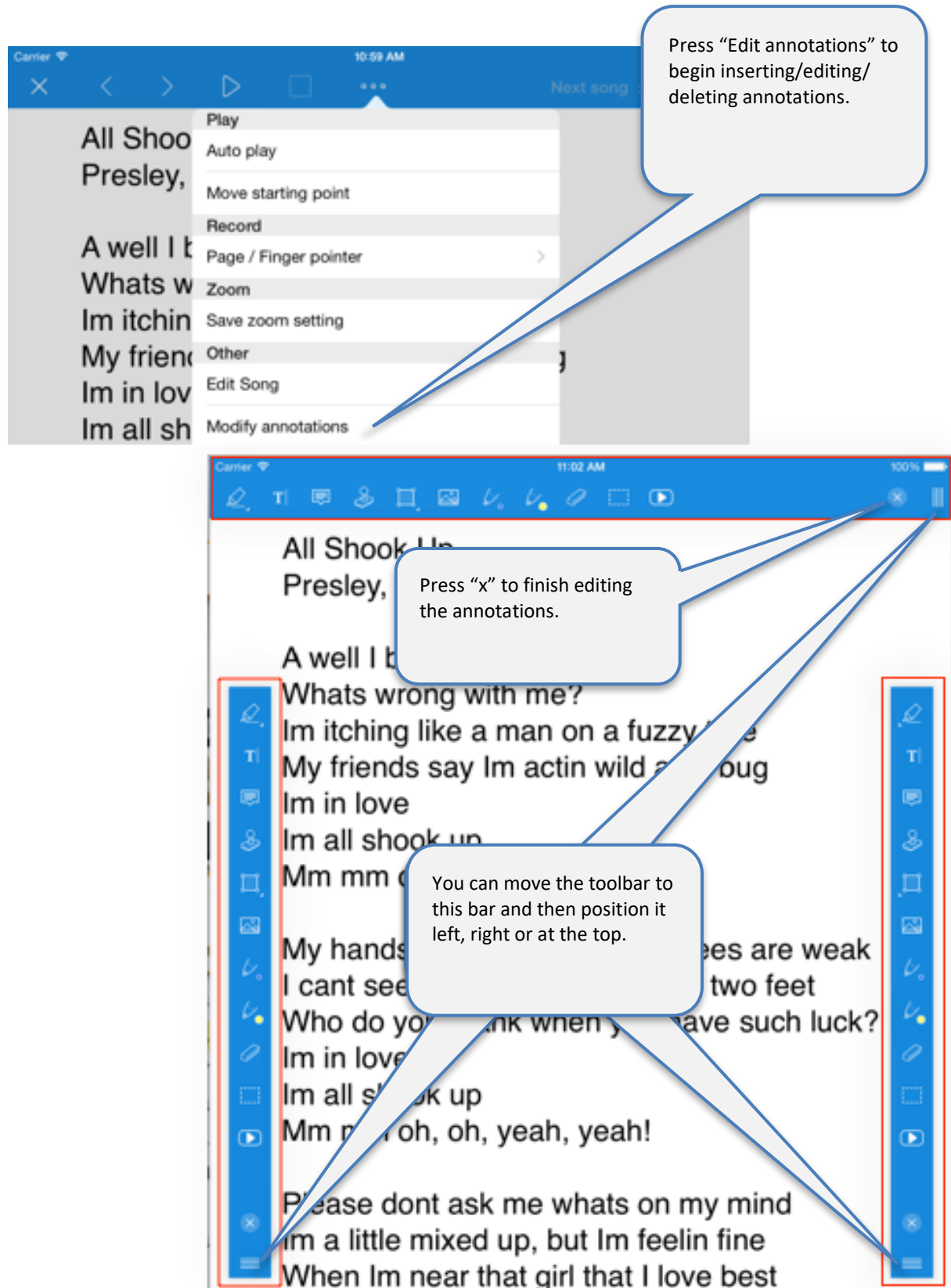
Confirm and start recording using this button.

Press the “Stop” button to stop recording.

Point with a finger where you want to see later the red dot during playback.

You can define a small offset between your finger and the red dot in the settings.

12 Inserting/editing/deleting annotations



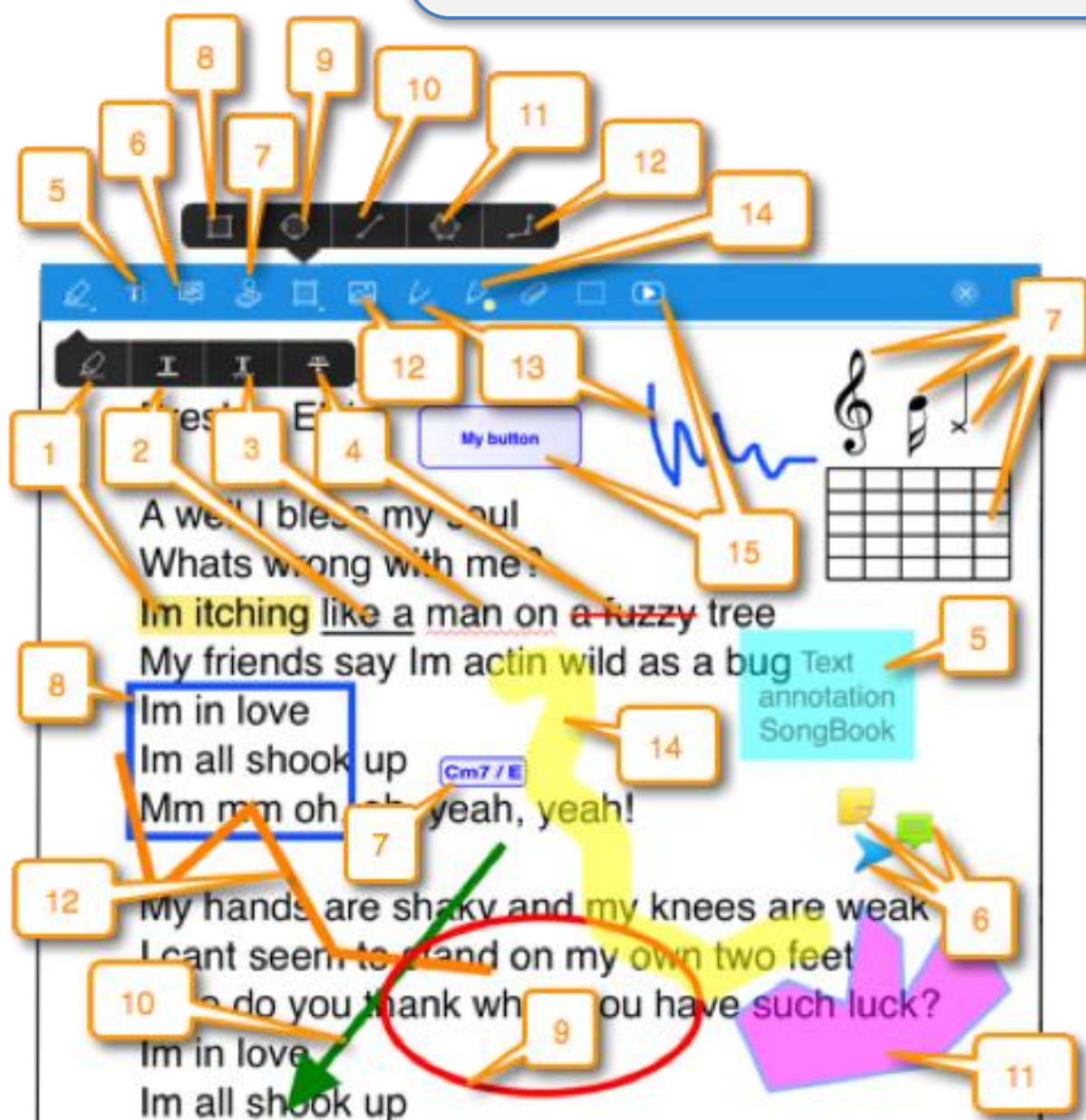
12.1 Inserting annotations

First, select what you want to add as an annotation and then insert it at the desired position in the document.

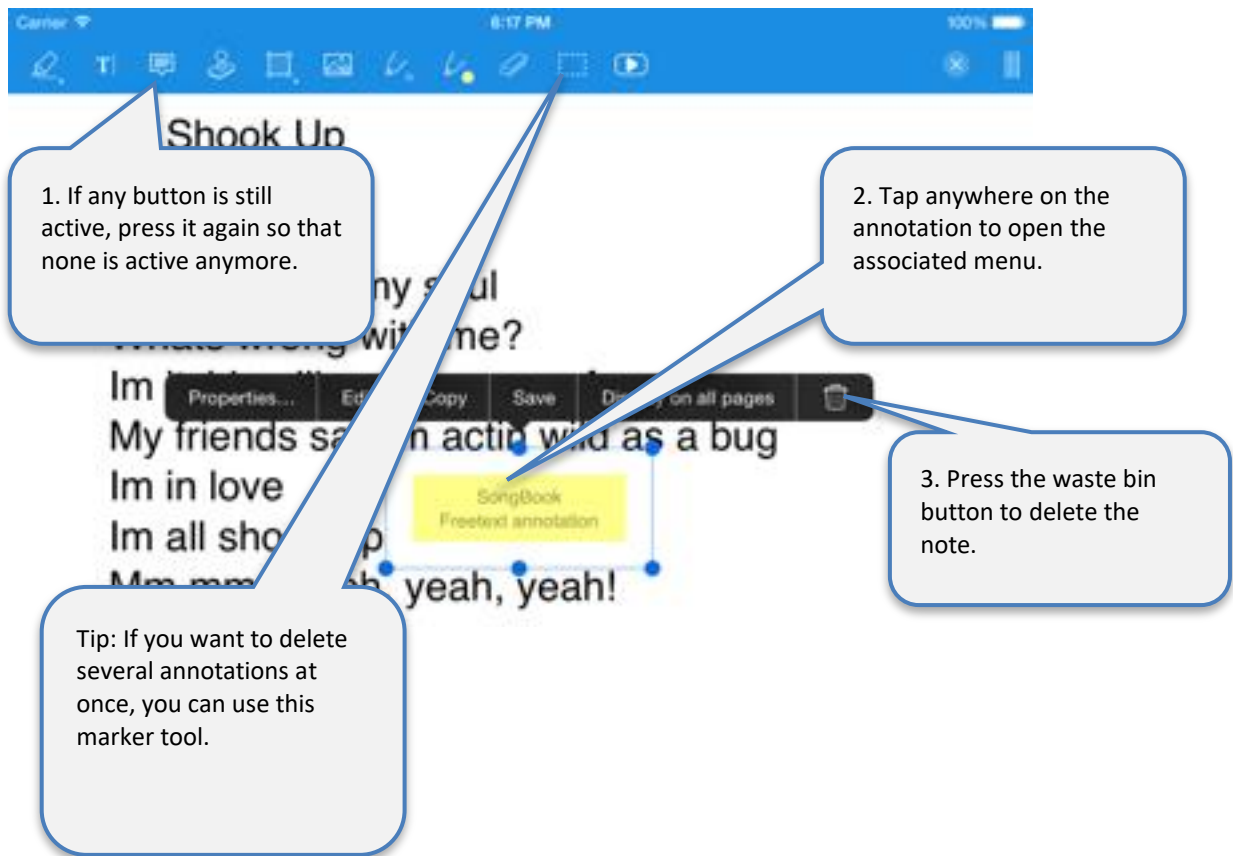
There are several variants of annotations for marking text and for drawing shapes.

(You can tell that from the small arrow in the corner of the button.)

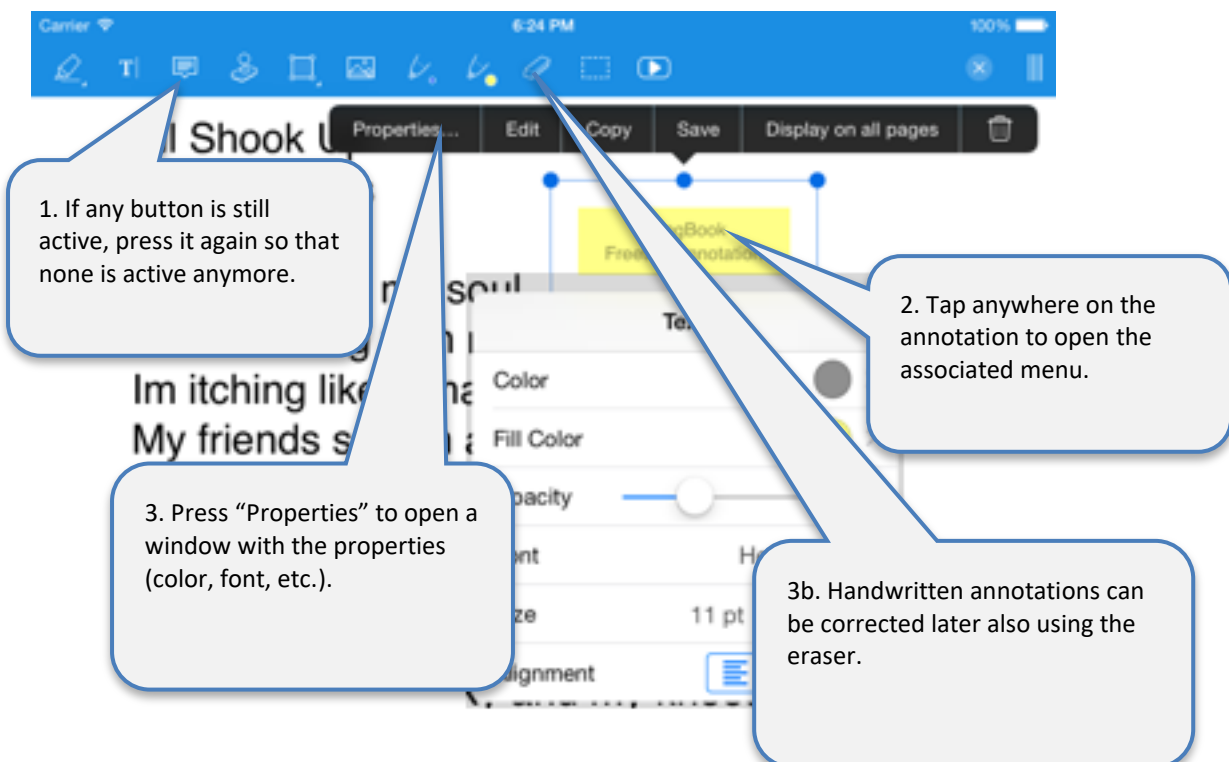
If you press and hold the button, a menu will open where you can select the desired variant.



12.2 Delete annotations



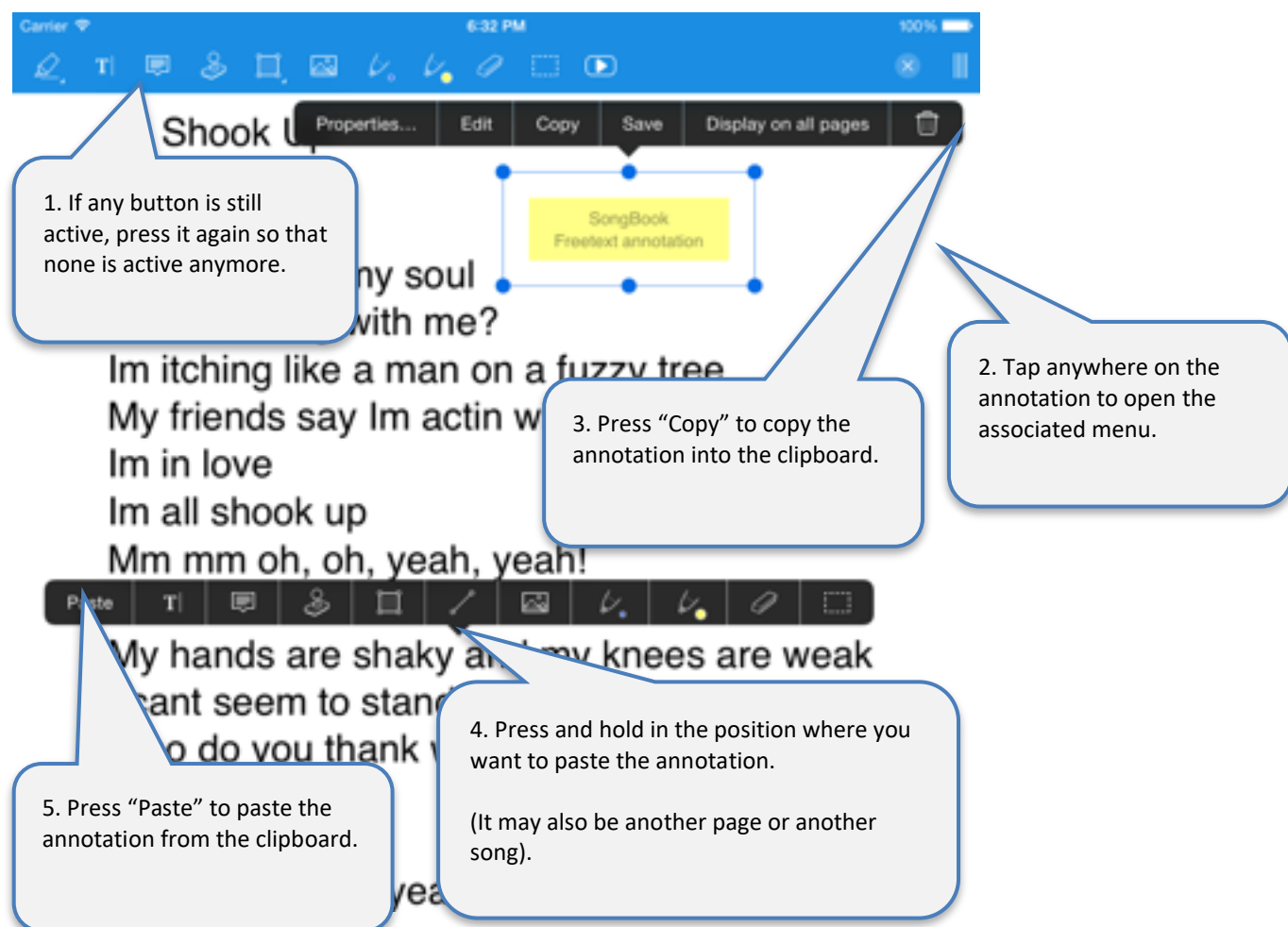
12.3 Editing Notes



Tip for chord annotations:

If you adjust a chord annotation this way (color, size, etc.), make sure that all other chord annotations in the same song look the same.

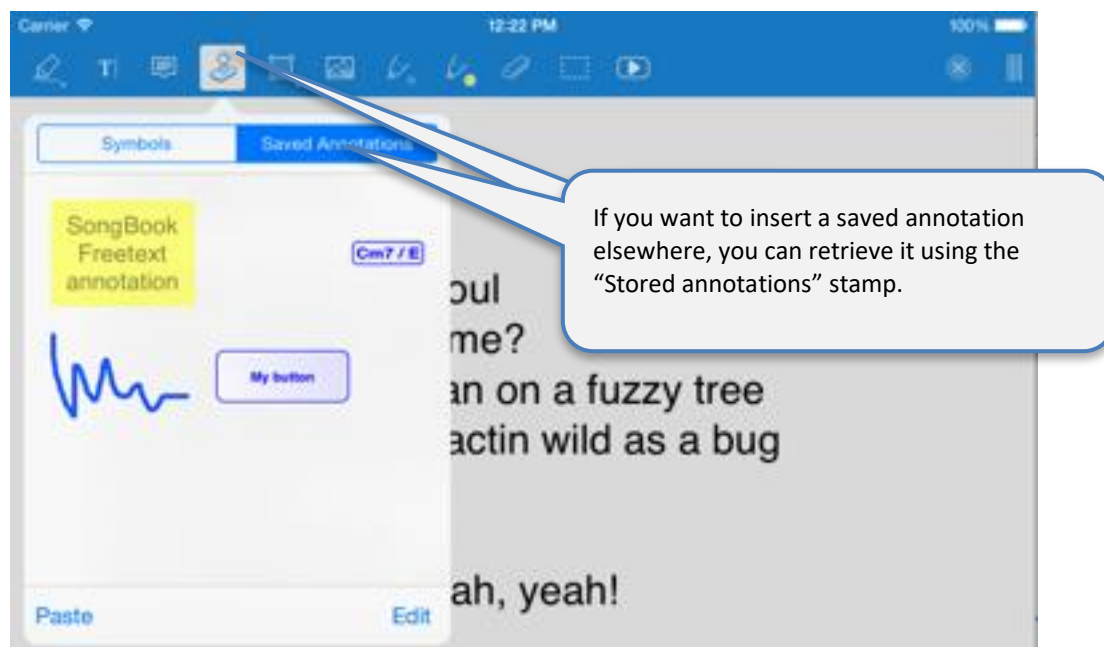
12.4 Copying annotations



12.5 Saving frequently used annotations



12.6 Using saved annotations again

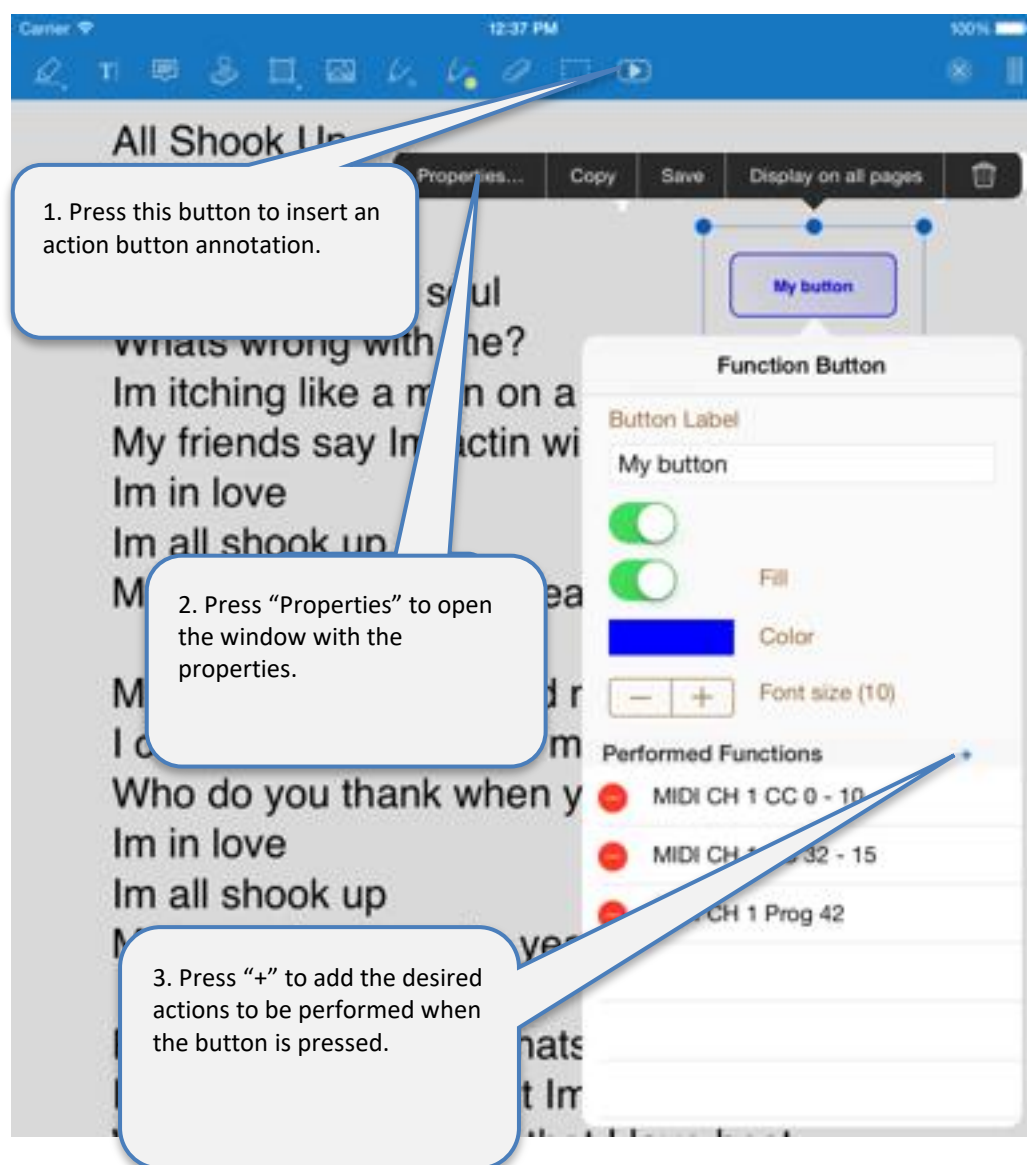


12.7 Action button annotations

Action button annotation is a very special annotation.

Using this feature, you can insert a button anywhere in the document and configure different actions to be performed when it's tapped.

Available functions include sending of various MIDI commands, jumping to a different page, starting or stopping playback, scrolling or launching the metronome, etc.



13 Using playlists

13.1 Selecting an existing playlist

1. Press this button to open the playlists menu.

2. Select the playlist you want to use.

3. The title of the selected playlist is displayed here.

4. The list contains only the songs of the selected playlist.

5. If your songs have a playing time, the playlist total playing time is displayed here.

Playlist: Playlist A1 (00:16:12)

Song Title	Artist	Genre	Playing Time
1. So ein Tag (212)	Mickie Krause	Deutsche Schlager	00:01:12
2. Alperose (145)	Polo Hofer	Mundart	00:01:12
3. Drei weiße Tauben (266)	Diverse	Deutsche Schlager	00:01:12
4. Don't you just (311)	Diverse	Englisch Pop	00:01:12
5. Grosses Walzer Potpourri	Diverse	Walzer	00:01:12
6. Leise rieselt der Schnee	Diverse	Walzer	00:01:12
7. 1.000 mal belogen	Diverse	Walzer	00:01:12

Attention:

If a playlist is selected, the “Edit” button is no longer used to edit the songs but to edit the content of the playlist!

13.2 Adding a new playlist

1. Press this button to open the playlists menu.

2. Press "Add new playlist".

3. Insert the name of the new playlist.

4. Press "Save".

5. The new playlist appears and is selected.

The new playlist does not contain any songs. You will learn how to add, remove, move or sort the desired songs in the list on the following pages.

13.3 Renaming or deleting playlists



13.4 Editing the content of the playlist

Press “Edit playlist” to start editing when the playlist is active.

While editing the songs in the playlist, you can sort and filter the existing songs to find the songs you want to add to the list.

Press the red “minus” button to remove a song from the playlist.

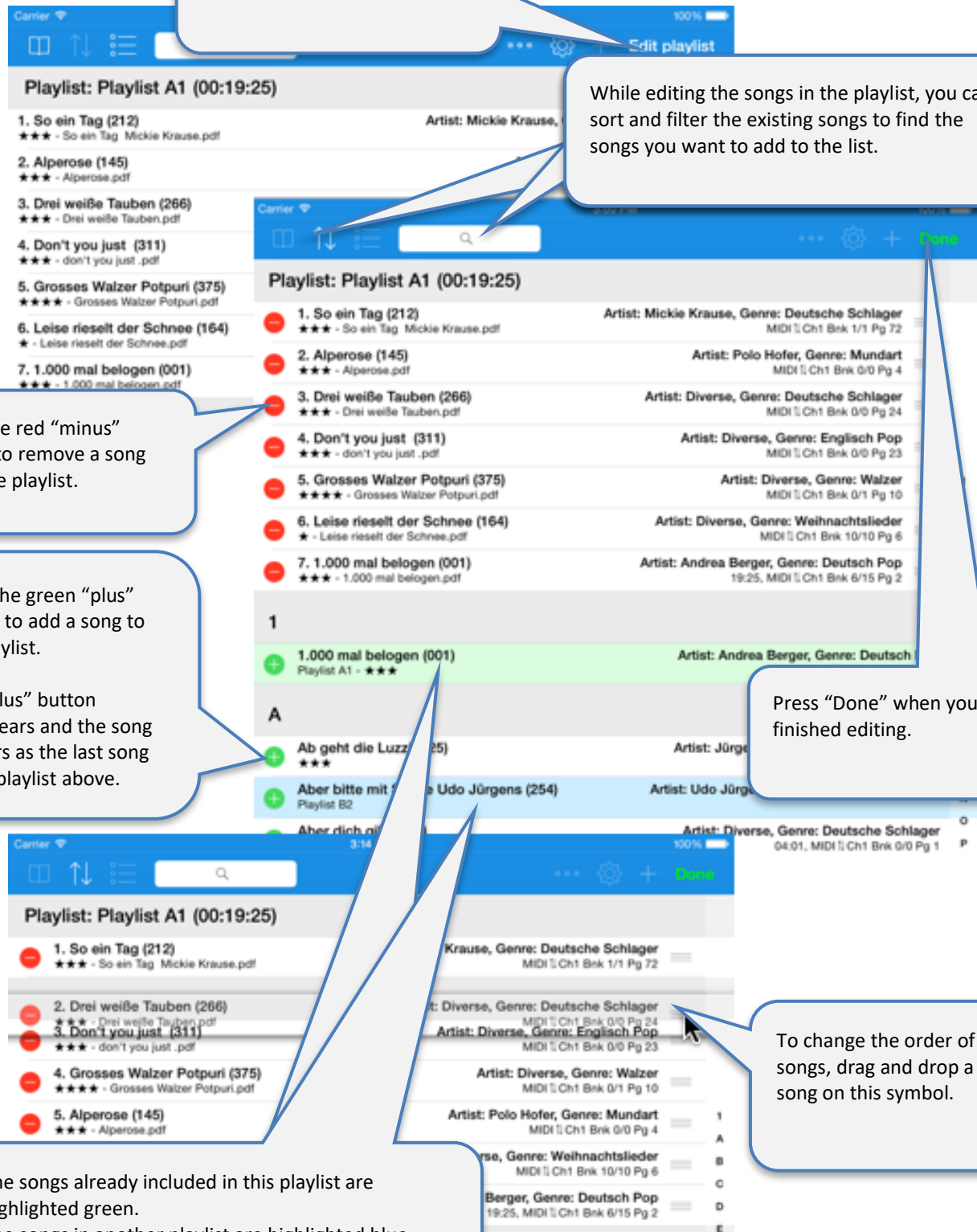
Press the green “plus” button to add a song to the playlist.

The “plus” button disappears and the song appears as the last song in the playlist above.

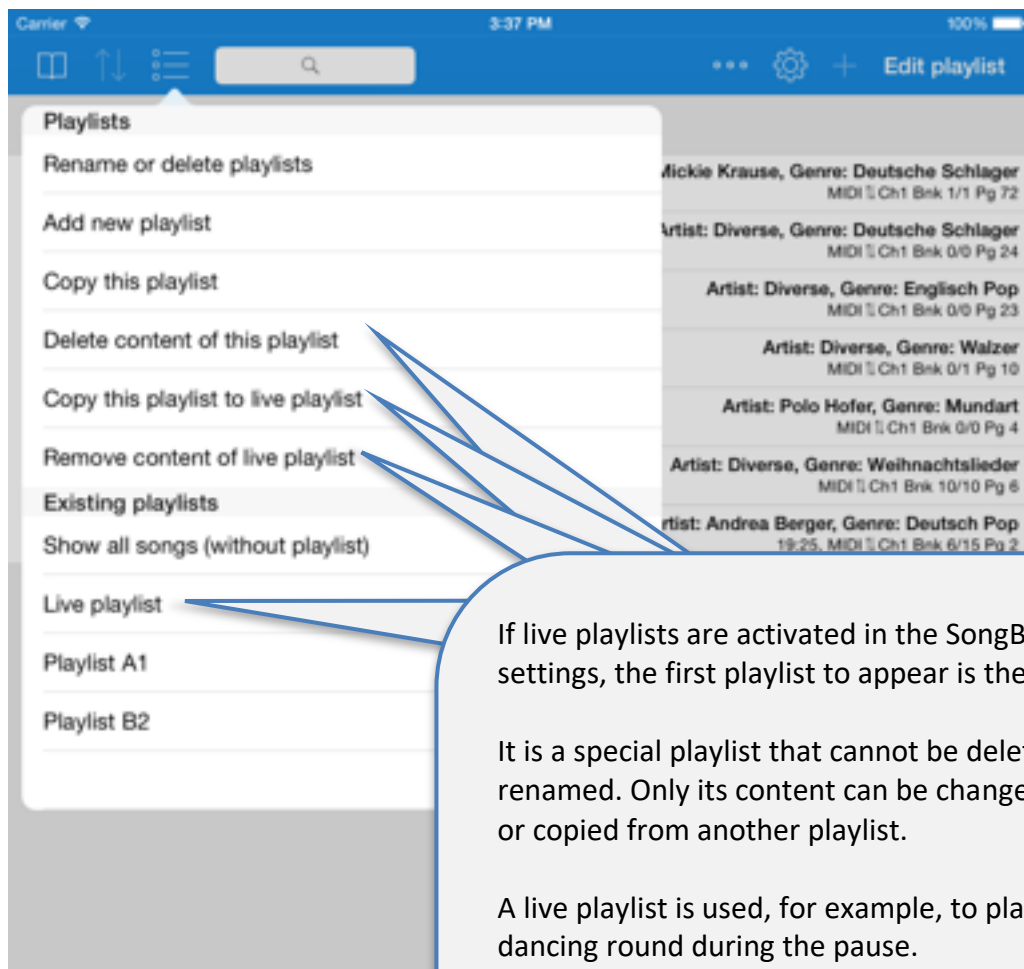
Press “Done” when you finished editing.

To change the order of the songs, drag and drop a song on this symbol.

The songs already included in this playlist are highlighted green.
The songs in another playlist are highlighted blue.



13.5 Live playlists



If live playlists are activated in the SongBook+ settings, the first playlist to appear is the live playlist.

It is a special playlist that cannot be deleted or renamed. Only its content can be changed, deleted or copied from another playlist.

A live playlist is used, for example, to plan the next dancing round during the pause.

If SongBook+ is configured for synchronous changeover of songs on multiple iPads, the live playlist can also be automatically synchronized to the other iPads in the same way.

14 Sharing songs or files (export)

Using the “Share songs” feature, the whole song (.sbk) or single files as well (.pdf, .mp3, .mid, ...) can be:

- used as an attachment in an email
- transferred directly to another app (e.g., Dropbox, iBooks, ...)
- transferred to another Songbook in the range



15 Importing lyrics and chords

SongBook+ can import lyrics and chords from MP3 files, Midi files, LRC files and ChordPro files.

15.1 Importing song lyrics and chords from MP3 files

SongBook+ can import texts from MP3 files if they are included in the ID3 tag in the “Lyrics3 v2.00” format.

Chords can also be imported from MP3 files, if they are included in the lyrics in square brackets (similar to ChordPro format).

The importing of lyrics from MP3 files is carried out in two steps:

First, it is necessary to create a song used by the MP3 file.

After that, you need to open the song and the importing will start. The missing PDF file is then generated automatically.

15.1.1 Adding a song without PDF and selecting MP3

1. Press “Edit”.

2. Press the “+” button to add a song without a PDF.

3. Select the MP3 file by pressing the “...” button.
The title is automatically populated with the file name, although it may be changed as desired.

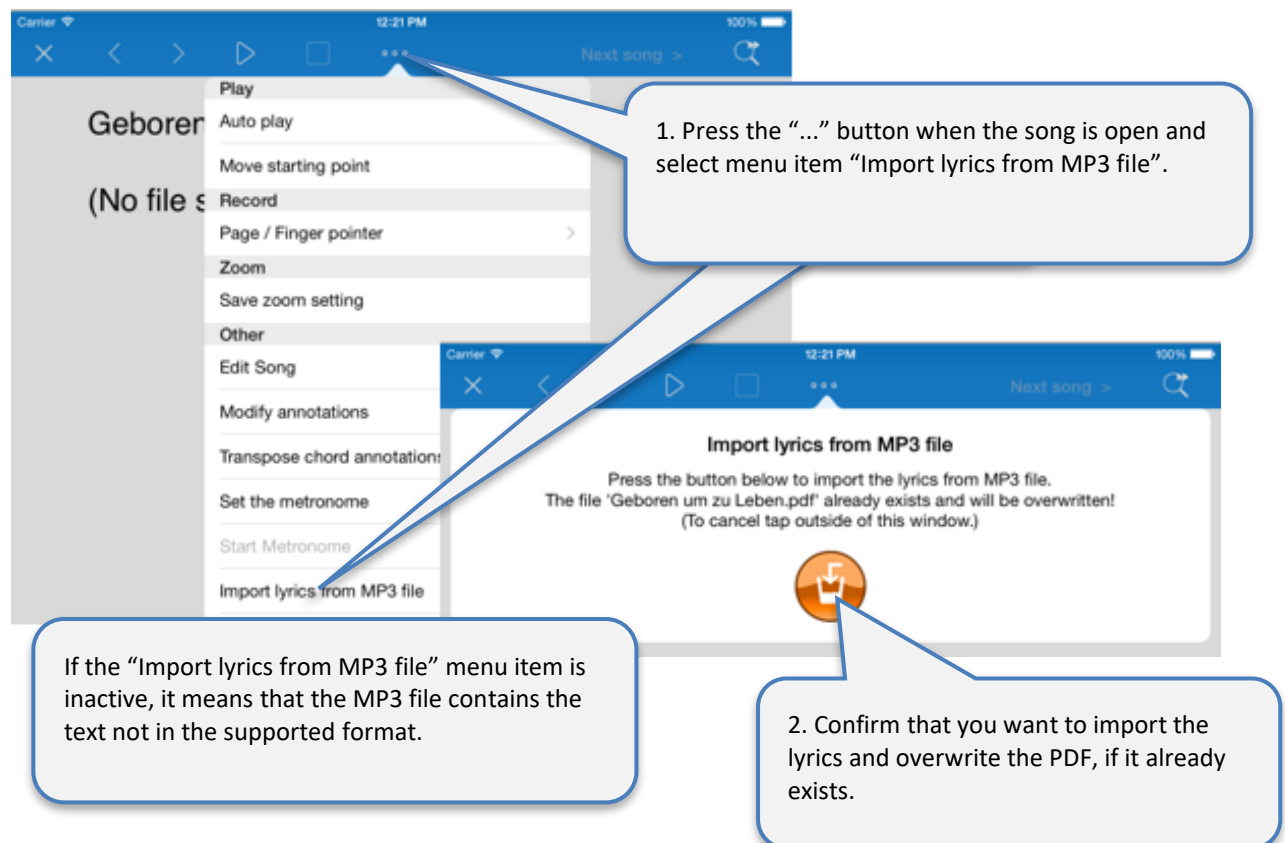
4. Press “Save”.

5. Press “Done”.

15.1.2 Create PDF from lyrics in MP3

If you then open the song for the first time and find SongBook+ text to import, you will be asked if you want to import the text.

Alternatively, you can start the import manually as before, as described in the following steps.



15.2 Importing song lyrics and chords from MIDI files

The importing of lyrics from MIDI files works just as described for MP3 files above. The only difference is that there is an own box for the selection of each MIDI file.

15.3 Importing song lyrics and chords from LRC files

The importing of lyrics from LRC files works in a similar way as described for MP3 files above. However, the LRC is not directly selected in the song. SongBook+ is rather searching for a file with the LRC extension which either has the same name as the lyrics or the assigned MP3 or MIDI file.

15.4 Importing song lyrics and chords from ChordPro files

Firstly, ChordPro files are entered in SongBook as usual text files or PDF files. After opening, indicate the unformatted original content of ChordPro file.

Using the “Import ChordPro file” menu item, it can be imported similar to MP3 files. The PDF file is generated then.

16 Transpose chords

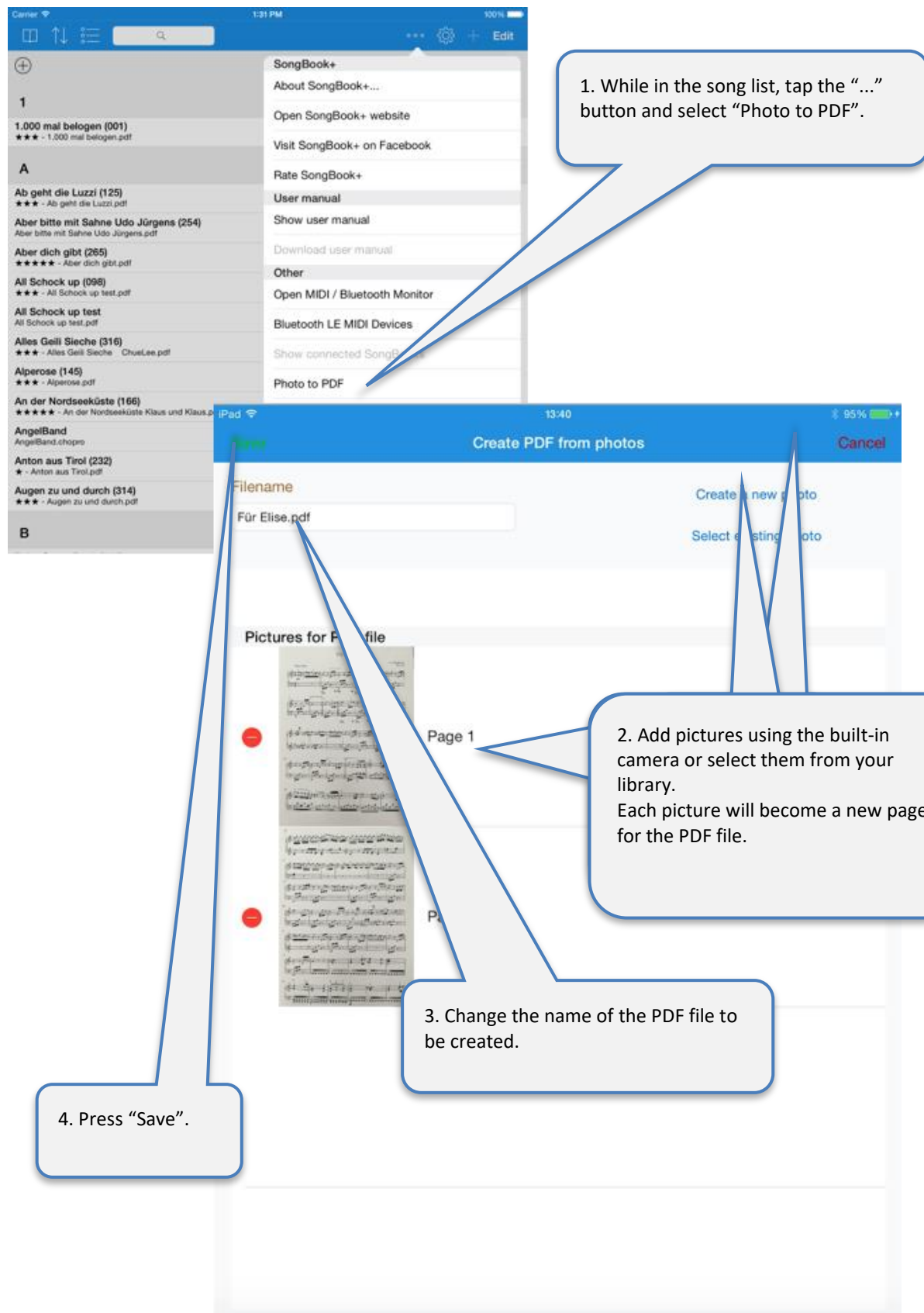
Chord symbols inserted using the annotation feature (see page 22) or imported from Midi/LRC/ChordPro (see page 34), can be transposed later.



Tip:

You can also subsequently change the appearance of chord notes (color, size, etc.). If you customize only one of the chord notes in a song, all other notes in the same song take over the same look.

17 Scanning lyrics on paper with built-in camera



18 Using the MIDI features

18.1 Connecting iPad to MIDI

There are several ways to connect the iPad with MIDI.

18.1.1 MIDI adapter and devices with USB MIDI interface

Many MIDI adapters and some devices (keyboards, etc.) have a USB interface for MIDI.

Since the iPad innately has no USB port, it an adapter to extend the iPad with a USB interface. Apple calls these adapters “iPad Camera Connection Kit”.

Then, USB MIDI adapters and USB MIDI devices can be connected if they are compatible with Apple.



Attention: With the USB adapter connected, the iPad cannot be supplied with power at the same time!

If the MIDI adapter (or the USB MIDI device) itself has no power supply, it even consumes the power to operate from the battery of the iPad, which can result in a short battery life or even an unreliable MIDI connection.

To prevent this, it is additionally advisable to use an active USB hub with power supply.

18.1.2 MIDI adapter directly connected to the iPad

Some MIDI adapters can connect to the iPad directly.

Some examples of those are:

- iConnectMIDI2+ by iConnectivity
- iRig MIDI Version 1+2 by IK Multimedia
- ioDock by Alesis
- iStudio is202 by Behringer
- ...

Using these adapters, the iPad can be partially supplied with power in MIDI operation (all the above except iRig MIDI version 2).

Also, there is a number of simple, small MIDI keyboards that can be connected directly to the iPad.



18.1.3 Wirelessly via Bluetooth or Wi-Fi

In the meantime, there are even wireless MIDI adapters that use Radio communication like Bluetooth or Wi-Fi to connect to the iPad.

Some examples of those are:

- mi.1 by QuiccoSound (Bluetooth)
- PUC wireless MIDI interface (Wi-Fi)
- Yamaha Tyros 5 keyboard with Wi-Fi stick
- Yamaha MD-BT01
- Yamaha UT-BT01
- Zivix PUC+

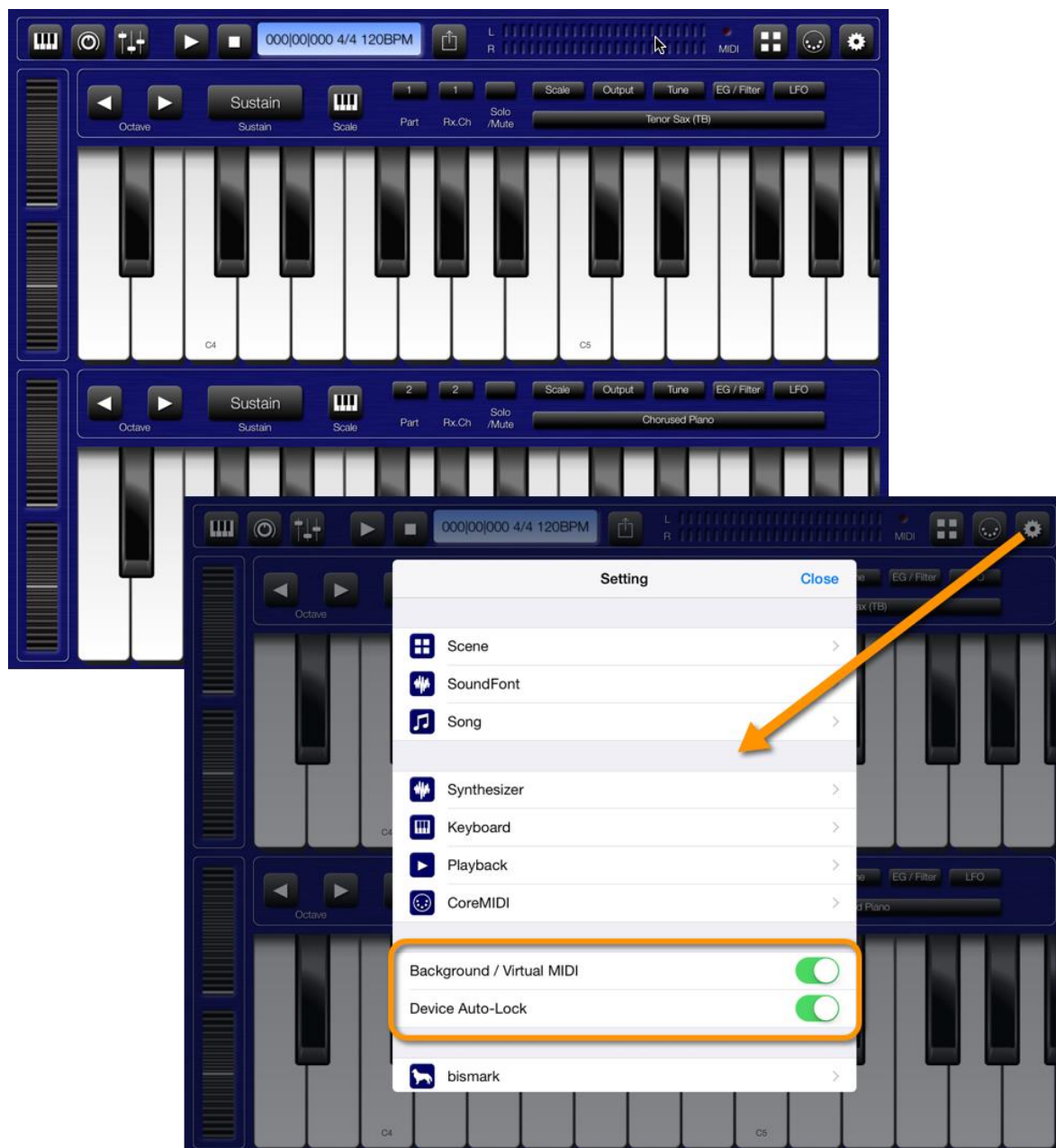


18.2 Playing back MIDI files

SongBook+ is able to play back normal MIDI files, but it does not have an integrated synthesizer to create sounds from.

In order to generate sounds from the MIDI files, additional external hardware connected via MIDI (such as a keyboard or an expander) or a third-party synthesizer app is required, running in the background and receiving the signals from SongBook via “Virtual MIDI”.

“bismark bs-16i” is an app that can be used to generate sounds directly on the iPad. If this app is running in the background with “Virtual MIDI” activated, you can listen to the music directly on the iPad, without any external hardware.



18.2.1 Opening song text on incoming MIDI commands

SongBook+ can listen for *ProgramChange* commands on the MIDI interface and then open a song. These commands normally select an instrument.

A typical use of this feature is that *ProgramChange* commands are sent from within a MIDI style, from within a played MIDI file, or from the keyboard when a registration was selected. SongBook+ then opens the corresponding song text. (A MIDI style can resend the same *ProgramChange* over and over again while looping; this will not lead to a problem.)

SongBook+ opens a song text, if it received *BankSelect* commands and a *ProgramChange* command as configured in the “Edit song details” window.

Please note that SongBook+ uses values from 0 to 127. If your keyboard uses numbers from 1 to 128 instead, you must subtract 1 to get the value to configure in SongBook+.

With these settings, the song will open if a MIDI device sends the command to select instrument 16 on bank 1 / 5 on MIDI channel 1.

Auto open on MIDI command ☒

Send MIDI command on open ☒

BankSelect		PG change
MSB	LSB	
	002	013
	003	014
000	004	015
001	005	016
002	006	017
003	007	018
004	008	019

PG

NRPN

Learn a MIDI command now

Use this button if you want to learn a command instead of configuring it using the wheels.

In the MIDI monitor window you can see the following if these MIDI commands are received.

Restart MIDI Send MIDI all sounds off

Restart Bluetooth Clear

14:41:31.514: **** chan 01 program change 1/5/16 triggers
14:41:31.513: **** chan 01 program change 1/5/16
14:41:31.513: Channel 01: program change 16
14:41:31.513: Channel 01: bank select low 5
14:41:31.513: Channel 01: bank select high 1

Please use the built-in MIDI monitor to find out what is actually received by the MIDI interface if it doesn't work as expected.

18.3 Sending MIDI commands when song text is opened

You can also enable SongBook to send MIDI commands when you open a song text.

A typical use of this feature is to configure external devices like a keyboard upon selecting a song.

There are different ways to send MIDI commands:

18.3.1 Sending the configured BankSelect/ProgramChange commands

SongBook+ sends the *BankSelect* and *ProgramChange* commands as configured in the “Edit song details” window, if the “Send MIDI command on open” switch is set to on.

The MIDI channel that SongBook+ is sending these commands on is the same as configured for the MIDI input.

The image shows a screenshot of the SongBook+ application interface. On the left, the 'MIDI settings' window is open, showing the 'Send MIDI command on open' switch turned on. On the right, a table displays the BankSelect and ProgramChange commands. A callout box explains that with these settings, a BankSelect High 1, a BankSelect Low 5, and a Program Change 16 message will be sent on MIDI output on Channel 1.

BankSelect		PG change
MSB	LSB	
	002	013
	003	014
000	004	015
001	005	016
002	006	017
003	007	018
004	008	019

With these settings a BankSelect High 1, a BankSelect Low 5 and a Program Change 16 message will be sent on MIDI output on Channel 1 as configured in the program settings.

18.3.2 Sending the contents of a MIDI file upon opening the song

SongBook sends the contents of a MIDI file upon **opening** the song, if a .mid file with exactly the same name as the .pdf file extended with “_open.mid” exists.

(e.g. MySong.pdf → MySong_open.mid)

Only type 0 MIDI files (single track) are allowed. All commands are sent at once, timing information is ignored and therefore this feature cannot be used to send music to the MIDI output, but only commands to configure the environment

18.3.3 Sending other configurable MIDI commands

Using the “Actions upon opening” button in the editing window of the song, you can define optional MIDI commands to be sent upon opening the song.

18.4 Sending MIDI commands when the song is started

18.4.1 Sending the contents of a MIDI file upon starting the song

SongBook sends the contents of a MIDI file upon **starting** the song, if a .mid file with the same name as the .pdf file extended with “_start.mid” exists.

(e.g. MySong.pdf → MySong_start.mid)

Only type 0 MIDI files (single track) are allowed. All commands are sent at once, timing information is ignored and therefore this feature cannot be used to send music to the MIDI output, but only commands to configure the environment

18.4.2 Sending MIDI Start when the song is started

You can configure in the settings, if SongBook should send MIDI Start upon starting the song.

18.4.3 Sending other configurable MIDI commands

Using the “Actions upon starting” button in the editing window of the song, you can define optional MIDI commands to be sent upon starting the song.

18.5 Sending MIDI commands when the song is stopped

18.5.1 Sending the contents of a MIDI file upon stopping the song

SongBook sends the contents of a MIDI file upon **stopping** the song, if a .mid file with the same name as the .pdf file extended with “_stop.mid” exists.

(e.g. MySong.pdf → MySong_stop.mid)

Only type 0 MIDI files (single track) are allowed. All commands are sent at once, timing information is ignored and therefore this feature cannot be used to send music to the MIDI output, but only commands to configure the environment

18.5.2 Sending MIDI Stop when the song is stopped

You can configure in the settings, if SongBook should send MIDI Stop upon stopping the song.

18.5.3 Sending other configurable MIDI commands

Using the “Actions upon stopping” button in the editing window of the song, you can define optional MIDI commands to be sent upon stopping the song.

18.6 Sending MIDI commands at a button touch

You can also send freely configurable MIDI commands from the song lyrics or musical notes at a single button touch with the help of the special “Action button” annotation.

To learn how you can insert and configure an action button annotation, see chapter [12.7](#).

19 Using foot pedals

19.1 Foot pedals that simulate an external keyboard

SongBook+ supports all foot pedals that are able to simulate an external keyboard and can send one or more of the following keys:



In the application settings, you can enable the use of foot pedals and assign the keys to the following actions:

- Do nothing
- Go one page forward/backward
- Press the Start/Stop/Pause/Continue button
- Jump to the next song
- Jump back to the song list
- Open song preselection list
- Start/pause/continue scrolling
- Scroll faster/slower
- Go the whole/half/third/quarter page forward or backward
- Turn automatic playback on/off/toggle
- Start/stop the metronome

You can see in the Midi and Bluetooth monitor which keys your foot pedal is sending.

To use this feature, you can use e.g. the following foot pedals:

- BT-105/BT-106/DIGIT/QUAD/DUO/PED/PEDpro/BT200S-x by Airturn (www.airturn.com) connected via Bluetooth
- Cicada/Firefly/Dragonfly/Butterfly by PageFlip (www.pageflip.com) connected via Bluetooth
- iRig BlueTurn by IK Multimedia (www.ikmultimedia.com) connected via Bluetooth
- BT-FP2 by Strich Music

19.2 Foot pedals that send MIDI commands

SongBook+ supports all foot pedals that can send one or more of the following MIDI commands:

- MIDI Start (used by Alesis io Dock pedal 1)
- MIDI Stop (used by Alesis io Dock pedal 2)
- MIDI Pause
- MIDI Continue
- MIDI Control-Change 63 to value (used by Alesis io Dock pedal 2)
- MIDI Control-Changes to an arbitrary value

In the application settings, you can enable the use of MIDI foot pedals (*) and assign the keys to the following actions:

- Do nothing
- Go one page forward/backward
- Press the Start/Stop/Pause/Continue button
- Jump to the next song
- Jump back to the song list
- Open song preselection list
- Start/pause/continue scrolling
- Scroll faster/slower
- Go the whole/half/third/quarter page forward or backward
- Turn automatic playback on/off/toggle
- Start/stop the metronome

Remark on Alesis io Dock: *The Alesis io Dock alternately sends MIDI Start and MIDI Stop on the first foot pedal. If you use this foot pedal you should assign in SongBook+ the same action for MIDI Start and MIDI Stop.*

Remark on Alesis io Dock 2: *Alesis io Dock 2 alternately sends the value 0 or 127 on the controller 14 (first pedal) or 15 (second pedal) with the pedals. If a pedal always performs the same action each time it is pressed, you must use two of the optionally configurable ControlChanges per pedal in SongBook+, one to respond when changing to 0, and another to respond when changing to 127, and assign the same action to both of them.*

Remark iRig BlueBoard: *The iRig BlueBoard alternately sends ControlChanges on the value 0 or 127. If a button always performs the same action each time it is pressed, you must use two of the optionally configurable ControlChanges per button in SongBook+, one to respond when changing to 0, and another to respond when changing to 127, and assign the same action to both of them.*

You can see in the Midi and Bluetooth monitor which commands your foot pedal is sending.

(*) Of course, the MIDI commands do not entirely have to come from a foot pedal. They can be sent by any connected MIDI device.

20 Connecting multiple iPads with SongBook+

You can connect multiple iPads with SongBook+, either via Bluetooth, Wi-Fi, MIDI (cable) or Wireless MIDI (wirelessly).

If you want to use the simple “short-haul connection”, select the “Server in short-haul connection” connection mode in “SongBook to SongBook connection” on one device and “Client in short-haul connection” on all the other ones.

Depending on availability, the operating system automatically chooses either Bluetooth or Wi-Fi for connection.

If you want to force a more reliable Wi-Fi connection, you can turn Bluetooth off completely in the general settings of the iPad.

If you want to establish a MIDI connection (wireless or wired MIDI), select option “MIDI connection” as the connection mode in “SongBook to SongBook connection” on all devices. For wireless MIDI, you additionally need to configure one MIDI device as a wireless MIDI Server and the other one as a wireless MIDI client in the settings.

After this has been done, the following actions can be synchronized between SongBooks:

- Selecting a song
- Preselecting a song
- Scrolling:
- Start button
- Stop button
- Live playlist

If you want to build multiple SongBook groups using short-haul connection or protect yourself against connections from external SongBooks, you can set a common connection key.

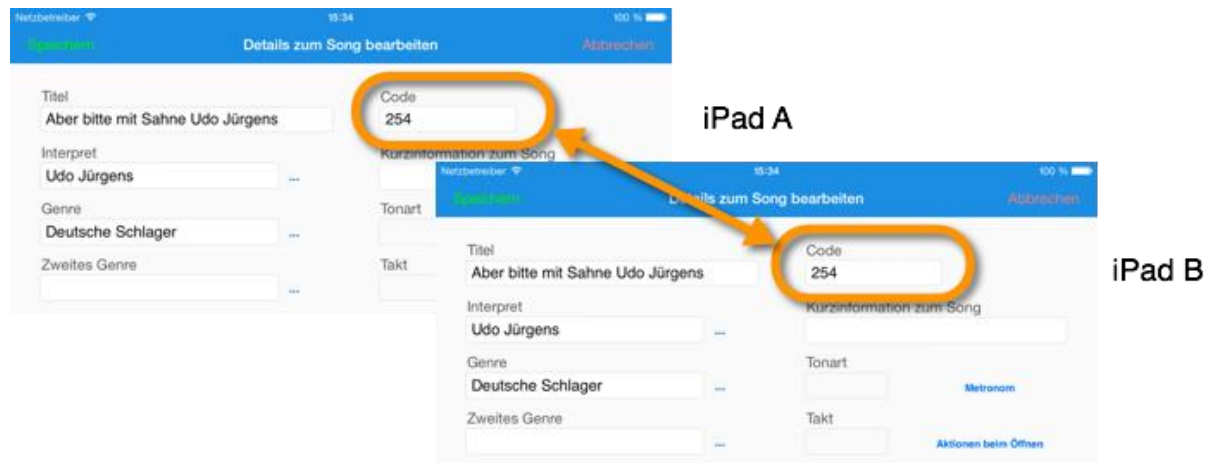
The devices connect automatically when you start SongBook+ if the feature is activated in the settings.



There are 2 methods to link the two associated songs on the various iPads via the code or the MIDI information of the song.
Select the sync method to be used in the settings of “SongBook to SongBook connection” as “Key field for synchronization”.

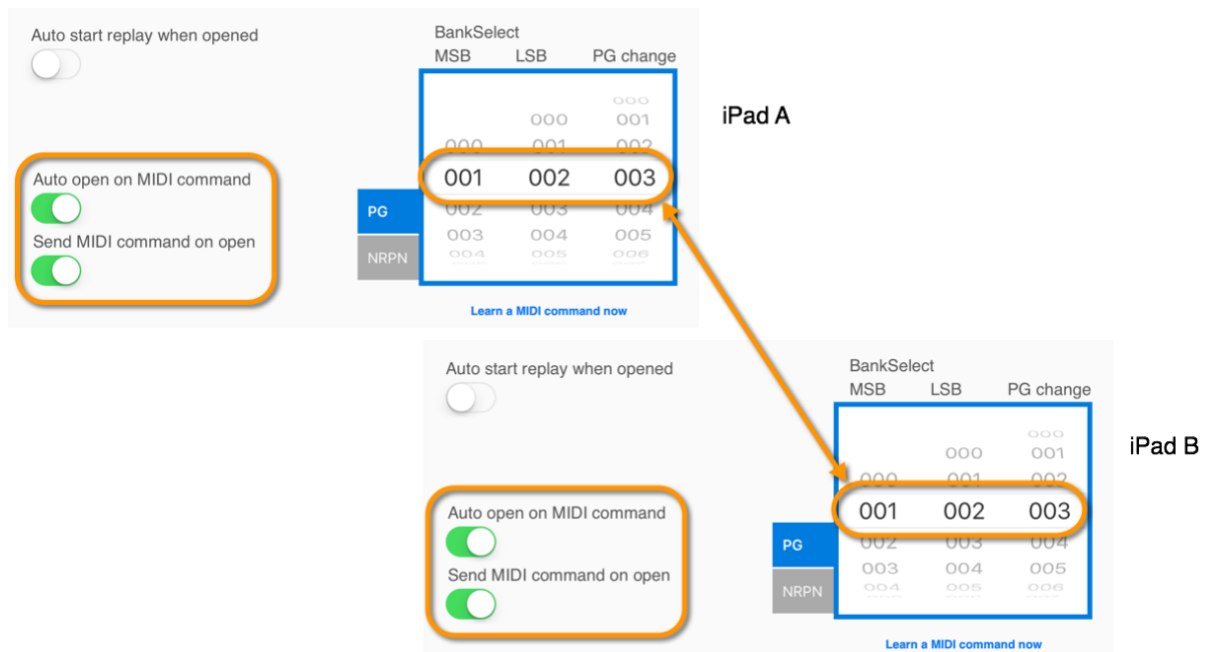
20.1 Synchronizing via code

Starting from SongBook+ version 2.1, a new method is available to provide an easier option to synchronously open songs on multiple devices. The content of the song's box “Code” is sent to the other iPads and a song with the same code is searched there.



20.2 Synchronizing via MIDI information

If you already use SongBook+ as remote control via MIDI with a keyboard or another external device, you can use the same MIDI settings to sync with other iPads. The 3 digits from the MIDI settings are sent to the other iPads and a song with the same 3 digits is searched there.

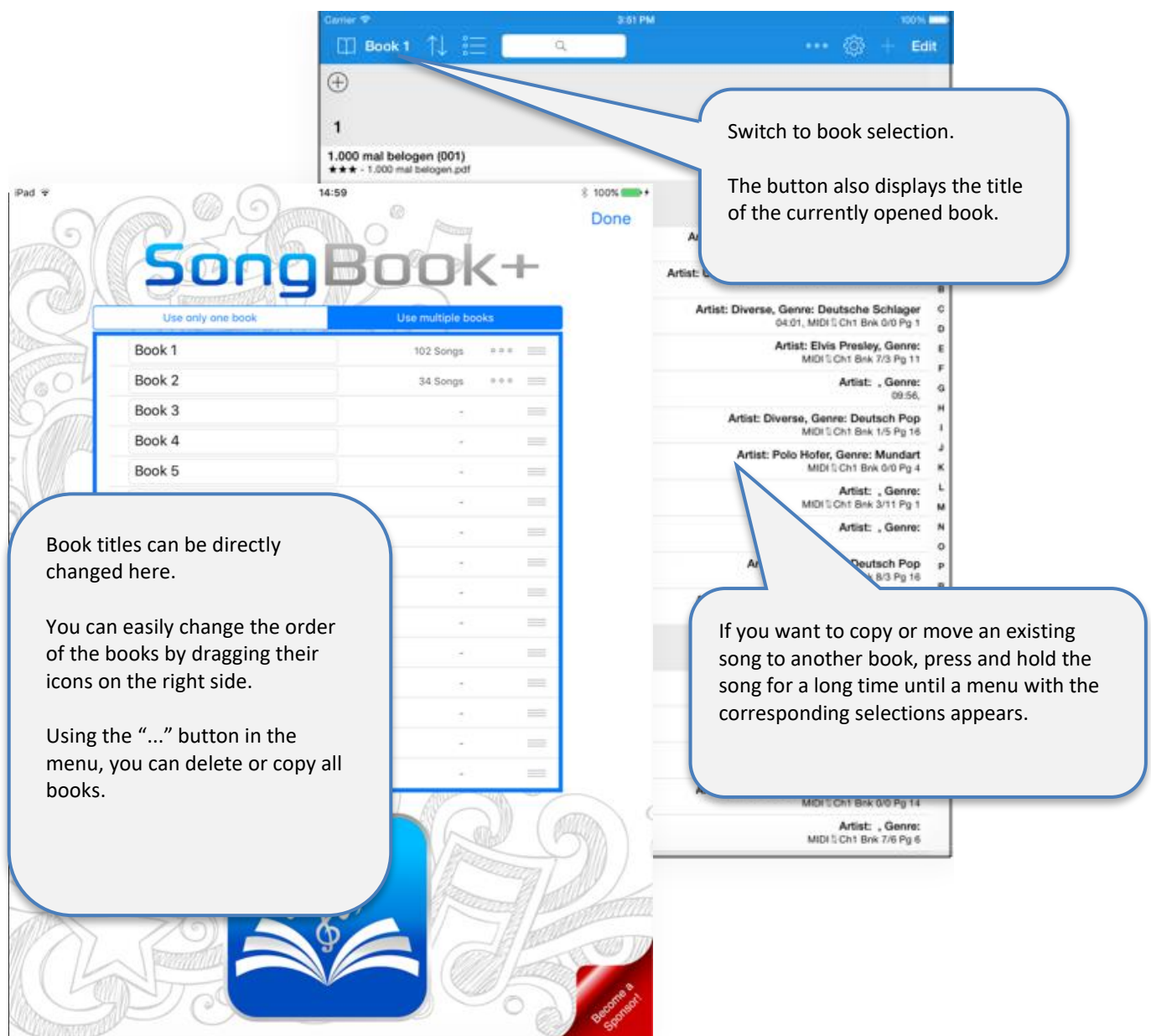


21 Using multiple books

If you want to use multiple books, press “Edit search” on the SongBook+ cover.

Then toggle the “Use multiple books” switch.

You will then see a list of 15 books on the cover. If you are no longer in the edit mode, tap to select the desired Book.



The database, the directory with the files and the list of the artists and genres entered are shared among all books.

An even stronger data separation can be achieved by means of multi-client support with subdirectories. For more information, see chapter 25.

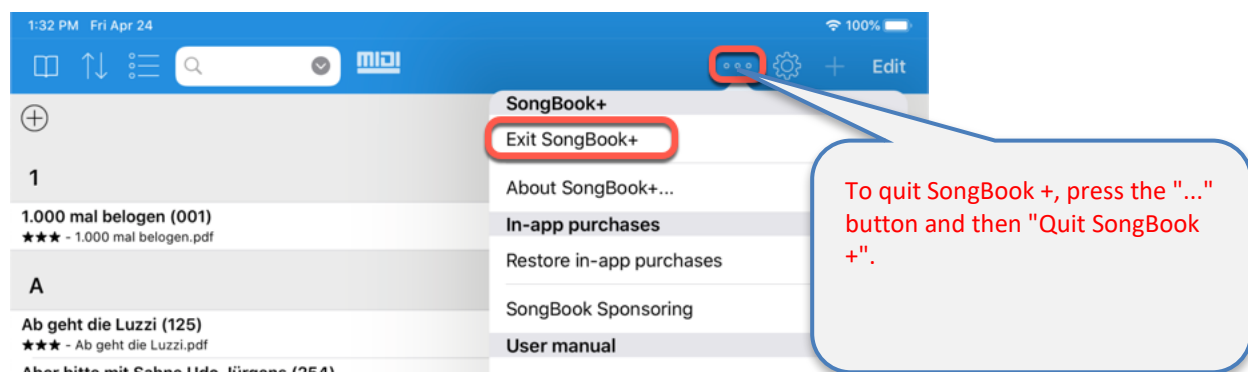
22 Backing up and restoring your data

The following chapters show how you can back up your data to your computer and how you can copy the backed-up data back to your SongBook+ (or to another device).

Always quit SongBook + completely before backing-up or restoring your files (unless you are using WiFi sharing)!

If you don't do that beforehand ...

- ... the database files may not contain the most up-to-date data when backing-up or may be incorrect.
- ... copying back the database files will be ineffective when restoring



22.1 Backing up your files

The most important files that you should definitely back up are the following 4 files:

- SongBookMidi.settings
- SongBookMidi.sqlite
- SongBookMidi.sqlite-shm
- SongBookMidi.sqlite-wal

They contain all the data and settings that you made directly in SongBook (song titles, artists, genres, notes, recorded scrolling and finger pointers, MIDI commands for sending, ...).

If one of the two files SongBookMidi.sqlite-shm or SongBookMidi.sqlite-wal has the size 0, it does not need to be saved. When copying the backup back to an iPad, this missing file must then be deleted on the target iPad.

If you used the Photo-to-PDF function of SongBook + or imported texts from MIDI files, ChordPro files, MP3 files etc., SongBook + also created PDF files for you. In this case, you should also save all PDF files

22.1.1 Backing up your data with the Finder (Mac Computer)

Quit SongBook + before saving the files inorder that that all changes be saved in the database files.

Please see chapter [2.1](#) how to use the Finder to access SongBook + files.

Select the files you want to save (at least the 4 files listed above). Multiple files can be selected with the mouse while holding the "Command" key on the keyboard. All files can be selected with the key combination "Command+A" on the keyboard.

Drag these files to another Finder window in the prepared folder where you want to save the files.

22.1.2 Backing up your data with iTunes (Windows PC and older Mac Computers)

Quit SongBook+ before saving the files so that all changes wil be saved in the database files.

Please see chapter [2.2](#) how to access SongBook + files with iTunes.

Select the files you want to save (at least the 4 files listed above). Multiple files can be selected with the mouse while holding the "Command" key on the keyboard. All files can be selected with the key combination "Command + A" on the keyboard.
(On a Windows PC, the "Command" key is called "Ctrl" or "Ctrl" instead.)

Then press "Save As...". Select a destination folder on your computer where you want to save your data.

22.1.3 Backing up your data using WiFi sharing.

Please see chapter [2.3](#) for how to access SongBook+ files using WiFi sharing.

Select the files you want to save (at least the 4 files listed above). Multiple files can be selected with the mouse while holding the "Command" key on the keyboard. All files can be selected with the key combination "Command + A" on the keyboard.

(On a Windows PC, the "Command" key is called "Ctrl" or "Ctrl" instead.)

Drag these files into the prepared destination folder on your computer where you want to back up the files.

22.1.4 Backing up your data with the "Files" App

Quit SongBook+ before saving the files in order for all changes to be saved in the database files.

With the Files app, you can copy files to a USB stick, your preferred cloud app, or even a server on the local network.

First create a new, appropriately named folder with the files app at the desired destination (in your cloud app or on the USB stick), e.g. SongBook-Backup-1 where you want to save the backed-up files.

In the example on the following page we show how you can back up the entire SongBook folder including all files. If you only want to save the 4 files mentioned above, you can do this 4x with the individual files.



22.2 Restoring Your Files

Quit SongBook + before restoring the backup, otherwise copying back the database files will have no effect (unless you use the WLAN release)!

The backed-up files will be copied back to SongBook+ in the same way as normal files will be copied to SongBook+.

Therefore, please see chapter 2 on how to copy files into the SongBook+ and proceed with your saved files.

If one of the two files SongBookMidi.sqlite-shm or SongBookMidi.sqlite-wal was not saved because it was 0, this missing file must also be deleted beforehand on the target iPad.

The folder "Inbox" cannot and must not be copied back! It does not contain any required data, though.

23 Quitting SongBook+ or other apps completely

If you close an app using the Home button, it continues to run in the background and still requires memory that other apps may lack.

Therefore, it is highly recommended, especially before operations, to quit all these apps completely including SongBook+ and then restart SongBook+ only so that it could use as much free memory as possible.



Note:

SongBook + also has a menu item "Exit SongBook +" at the button "...", with which it can be completely closed.

24 Individual audio outputs with external hardware

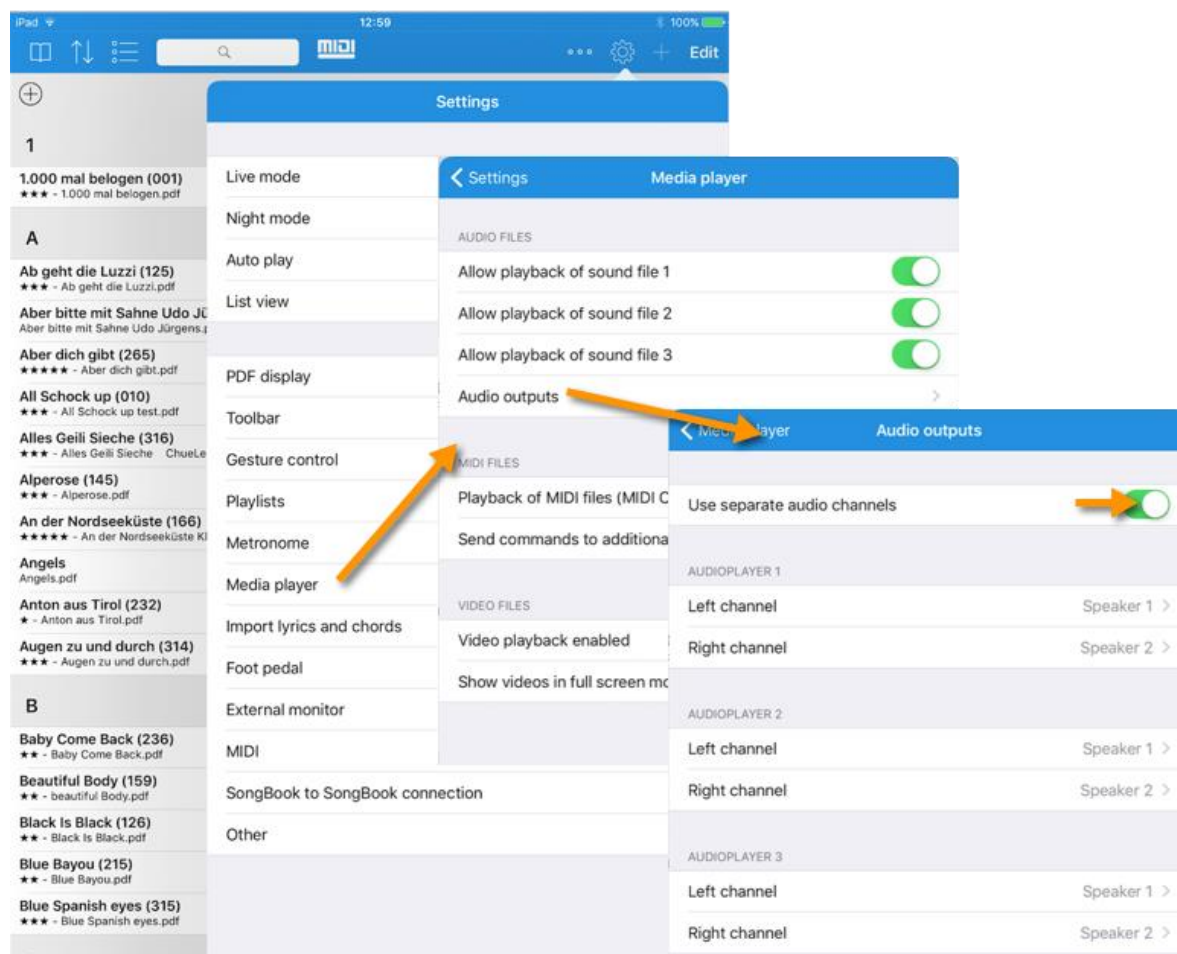
External audio hardware can be connected to the iPad using individual audio outputs.

Some examples of those are:

- iConnectAudio2+
- Behringer X18
- ESI Gigaport HD+

If you want to route the channels (left/right) of the 3 audio players in SongBook+ to the specific audio outputs of the external hardware, you can do this in the SongBook MediaPlayer settings.

It is useful, for example, if you want to play a synchronous click track for the drummer that can be heard by him only.



25 Multi-client support with subdirectories

If you want to copy another musician's data into your SongBook+ without overwriting your own data, you can now create subdirectories in SongBook+ with completely separated data.

Each of these directories contains a separate database (SongBookMidi.sqlite, SongBookMidi.sqlite-shm, SongBookMidi.sqlite-wal files), custom settings (SongBookMidi.settings file) and your own files (PDF, MP3, ...).

Unfortunately, it is not possible to create and access such subdirectories via iTunes, but only via WLAN sharing from the SongBook+ folder or via the "Files" app.

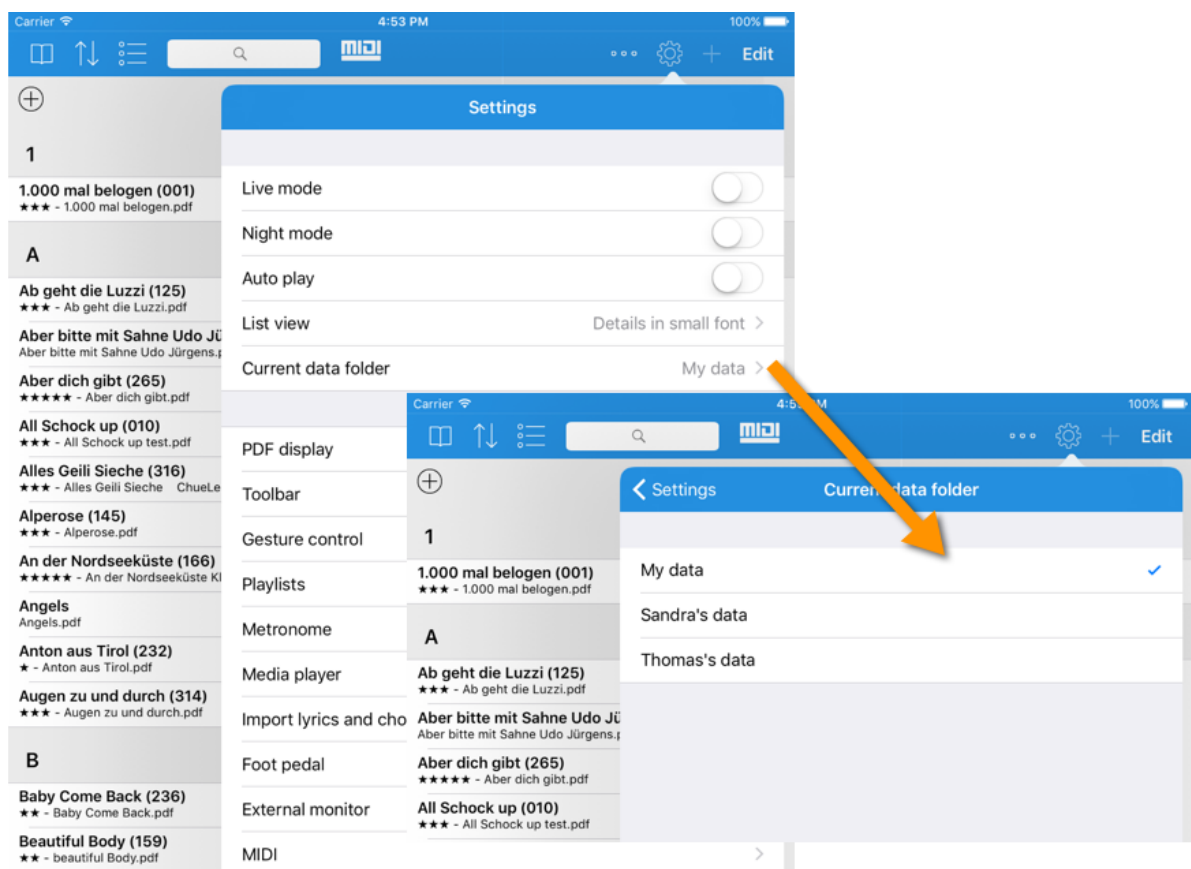
You can find more information about access via WLAN sharing or the "Files" app in chapters 2.3. and 2.4.

Simply create directories with names having "SBDATA_" at the beginning, e.g.

- SBDATA_My Data
- SBDATA_Thomas' Data
- SBDATA_Sandra's Data

You can easily change the current folder in the settings later.

After selecting another folder, SongBook+ will close and must be restarted.

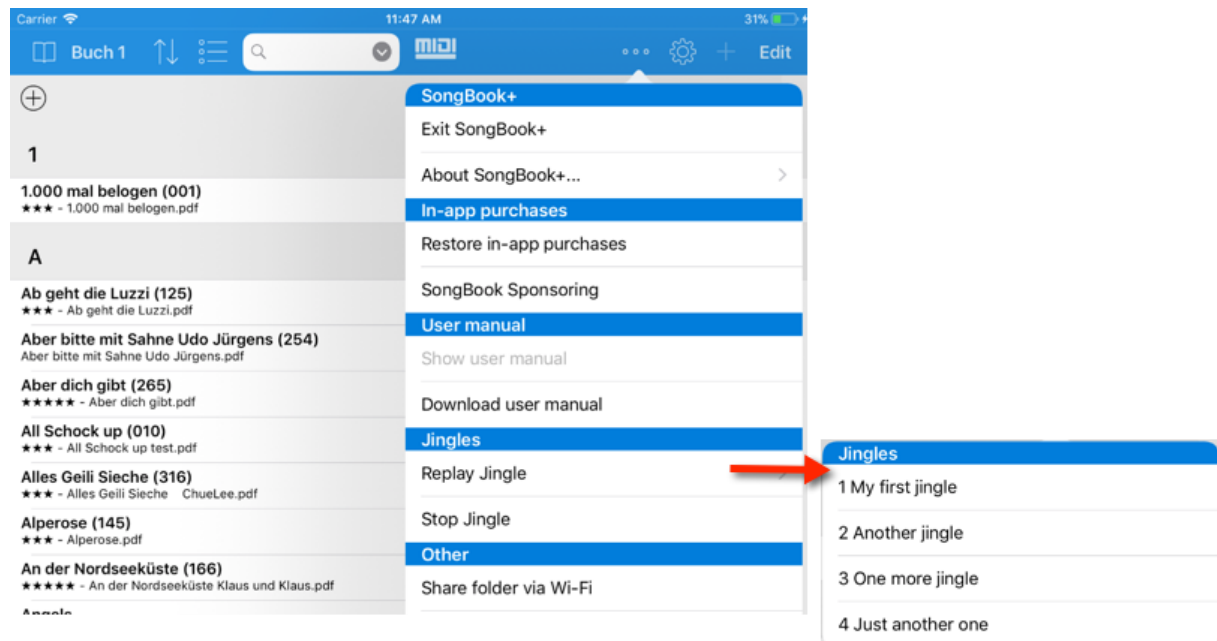


26 Playing "Jingles"

Jingles are frequently used, short audio files, which can be played fast and easily at any time.

You can access them either via the menu or via configurable gestures, foot pedals or via actions in function buttons.

Audio files (mp3, wav, aiff, m4a), which start with SB-Jingle-", are recognized by the jingle function and are sorted alphabetically in a submenu "Jingles" at the button "...".



In the sample image, the following 4 files were copied to SongBook +:

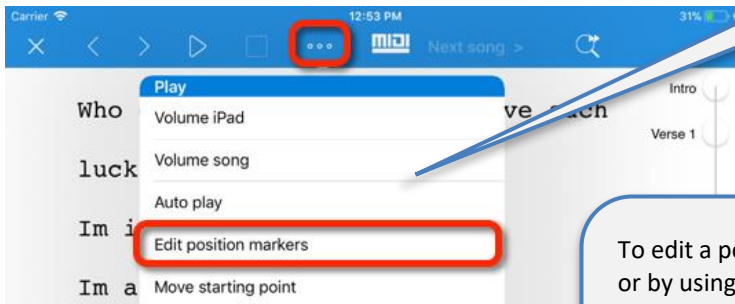
- SB-Jingle-1 My first jingle.wav
- SB-Jingle-2 Another jingle.mp3
- SB-Jingle-3 One more jingle.mp3
- SB-Jingle-4 Just another one.mp3

It is possible to configure and access the first 10 jingles via gesture control, foot pedals or function buttons. Here, however, you can only address them via your position in the alphabetically sorted list, ie Jingle 1, Jingle 2, Jingle 3,

Therefore, you should best name the files after the prefix "SB-Jingle" so that you appear alphabetically sorted in your desired order.

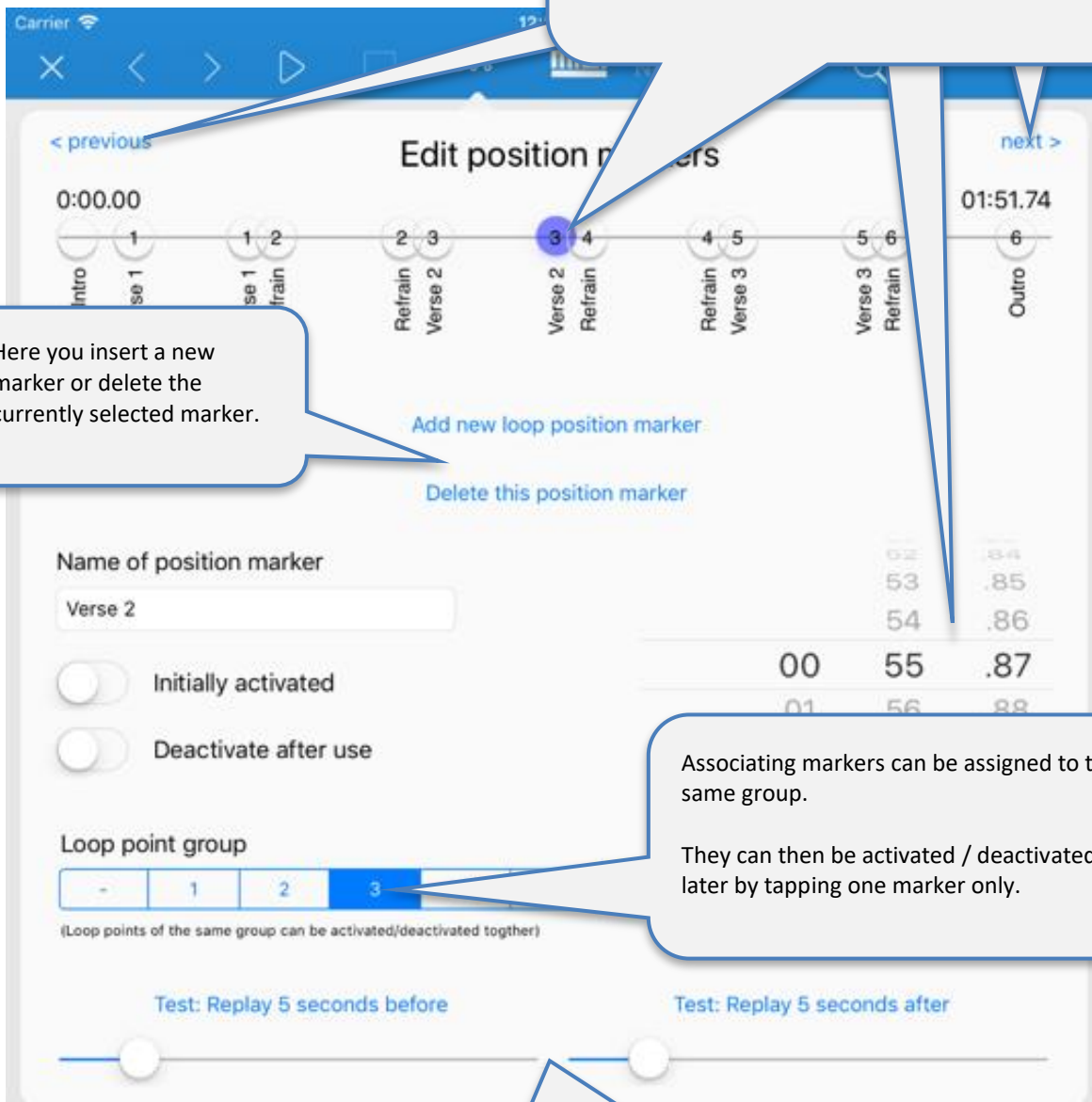
27 Position markers and Loop funktion

Open the editor for position markers here.



To edit a position marker, first select it by tapping directly or by using the buttons next or previous.

You can either move it with your finger or adjust the time with the 'wheel'.



Here you insert a new marker or delete the currently selected marker.

Associating markers can be assigned to the same group.

They can then be activated / deactivated later by tapping one marker only.

To check the exact position, you can listen to the last seconds before or the first seconds after the point.

If two markers are activated, at least one of which is in the future, SongBook + shows the scheduled jump with an arrow. The jump is executed when the second marker is reached, if it is still activated.

When playing pause, the position markers also appear. By tapping on a marker, the current position is set to this position.



28 Supported file formats

28.1 Files for text or note display

Files with file extensions PDF, PNG, JPG, JPEG, GIF, TXT are used for displaying song lyrics or musical notes.

28.2 Music files

Files with file extensions MP3, WAV, AIFF, M4A can be used for music playback.

28.3 Midi files

Files with file extensions MID, MIDI, SMF can be used for MIDI output.

28.4 Video files

Files with file extensions MOV, MP4, MPV, 3GP, M4V and the following compression standards can be used for video output directly to the iPad itself or to an external monitor or projector:

- H.264 Baseline profile level 3.0 video up to 640x480 at 30 fps
- MPEG-4 Part 2 video (Simple Profile)

28.5 ChordPro files

ChortPro files with the .chopro extension can be imported to display texts and chords.

28.6 LRC files

LRC files with the .lrc extension can be imported to display texts and chords.

28.7 MP3 files with with embedded text

SongBook+ can import texts from MP3 files if they are included in the ID3 tag in the “Lyrics3 v2.00” format.

29 Contribution

MIDI communication:

The MIDI communication is based on sample code by Pete Goodliffe.
Thank you Pete for publishing your sample code on the Internet.

Further details can be found here:

<http://goodliffe.blogspot.com/2010/10/using-coremidi-in-ios-example.html>

Musical symbols:

The musical symbols inserted using the annotation feature come from Linkware Graphics.
Many thanks to Shirley Kaiser for publishing these symbols.

Further details can be found here:

<http://linkwaregraphics.com/music/>

In-app settings:

The settings integrated in the app were implemented using “InAppSettingsKit”. Many thanks to Luc Vandal and Ortwin Gentz for development and publication.

Further details can be found here:

<http://www.inappsettingskit.com>

OpenSSL:

SongBook+ uses OpenSSL. Under the license terms, the following sentence must be mentioned:

“This product includes software developed by the OpenSSL Project for use in the OpenSSL Toolkit (<http://www.openssl.org/>).”

30 Contact information

If you have any questions or feedback about SongBook+, please visit us at

<http://www.songbookplus.com>

You can find a contact form here to send us a message, a list of frequently asked questions, download links for the App Store, the latest version of this document and more.